



**END-TO END FAST TRACK  
SOLUTIONS**



# BUILD THE FUTURE, TODAY

---

At ALBADDAD, we imagine a future where our cutting-edge solutions redefine standards for efficiency, sustainability, and quality.

Committed to providing rapid and exceptional products, we aim to be the leading global provider of event spaces, construction solutions, artistic designs, and engineering innovations. Our goal is to make a lasting impact as the 'World Under One Roof.'

Established in 1971, ALBADDAD has evolved from a local brand to an international powerhouse, setting benchmarks in production capacity, record time delivery, state-of-the-art technology, top tier products, and pioneering in fast-track permanent and semi-permanent buildings.



# END-TO-END EXCELLENCE

ALBADDAD's project management team offers detailed oversight from design to handover, including financial and risk management. They collaborate closely with in-house and external specialists, providing a tailored approach to meet specific client needs. Our diverse PMC department delivers comprehensive support, ensuring a seamless experience from concept to key handover.

# INNOVATIVE, CUSTOMIZED FAST-TRACK SOLUTIONS

ALBADDAD offers all-inclusive, fast-track, and holistic customized structure solutions, committed to personalized excellence that meets your unique needs. We elevate your projects to new heights with unmatched quality.



# MEGA PROJECT EFFICIENCY WITH UNPARALLELED QUALITY STANDARDS

ALBADDAD is distinguished by its capacity for mass production, offering tailor-made solutions at a competitive pace. We deliver seamless integration of top-tier solutions that not only meet but exceed industry standards, propelling your projects to new heights with unmatched quality.



# SUSTAINABILITY IS OUR CORE VALUE



## LEADING IN GREEN MATERIALS & RECYCLING

As a leader in modular construction, ALBADDAD is committed to sustainable building practices and innovative, eco-friendly solutions.

We are proud to be awarded the EcoVadis “Committed Certificate”, recognizing our environmental, social, and ethical responsibility. Together, we are building a greener future.

**Recycling Programs:**  
Steel, aluminum, PVC

**Reduce Single-Use Plastics:**  
Minimize plastic waste

**Energy Star Equipment:**  
Promote energy efficiency

**Waste Diversion,**  
30% landfill diversio



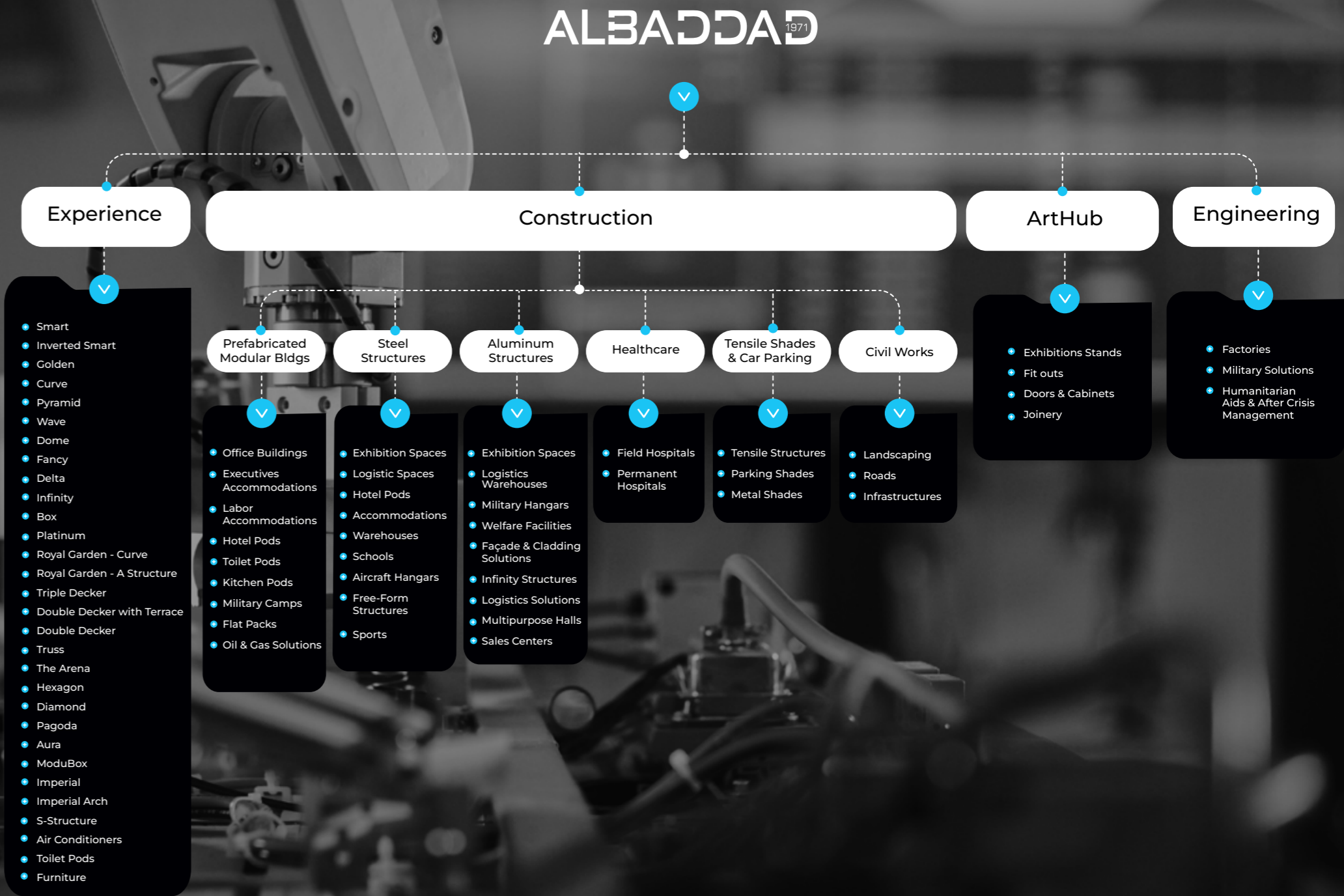
# MANUFACTURING CAPABILITIES

**33,000** tons  
Aluminium structures per year

**40,000** tons  
Steel structures per year

**20** tons  
of **Light Gauge Steel**  
Structures per day

**300,000** square meters  
of **Modular Building** per year





# PRODUCTS

**PREFABRICATED  
MODULAR BUILDINGS**

**STEEL STRUCTURES**

**ALUMINIUM STRUCTURES**

**HEALTHCARE**

**CIVIL WORKS**



**TENSILE SHADES  
& CAR PARKING**

**MILITARY  
SOLUTIONS**

**FLAT PACKS**

**OIL & GAS  
SOLUTIONS**

**MEP SOLUTIONS**



# PREFABRICATED MODULAR BUILDINGS

# PREFABRICATED MODULAR BUILDINGS

Discover the essence of modern architecture with ALBADDAD Prefab & Modular products, meticulously designed to fulfil contemporary demands. Our offerings provide distinctive solutions for crafting semi-permanent or permanent modular structures. Whether you envision a five-star smart hotel pod or a sprawling resort, our customizable solutions offer unparalleled flexibility and quality.

-  **Quick construction & installation**
-  **Customization & flexibility** in designs
-  **Less disruption**
-  **Consistent quality**
-  **Sustainable & Environmentally friendly**



**PREFABRICATED MODULAR BUILDINGS**

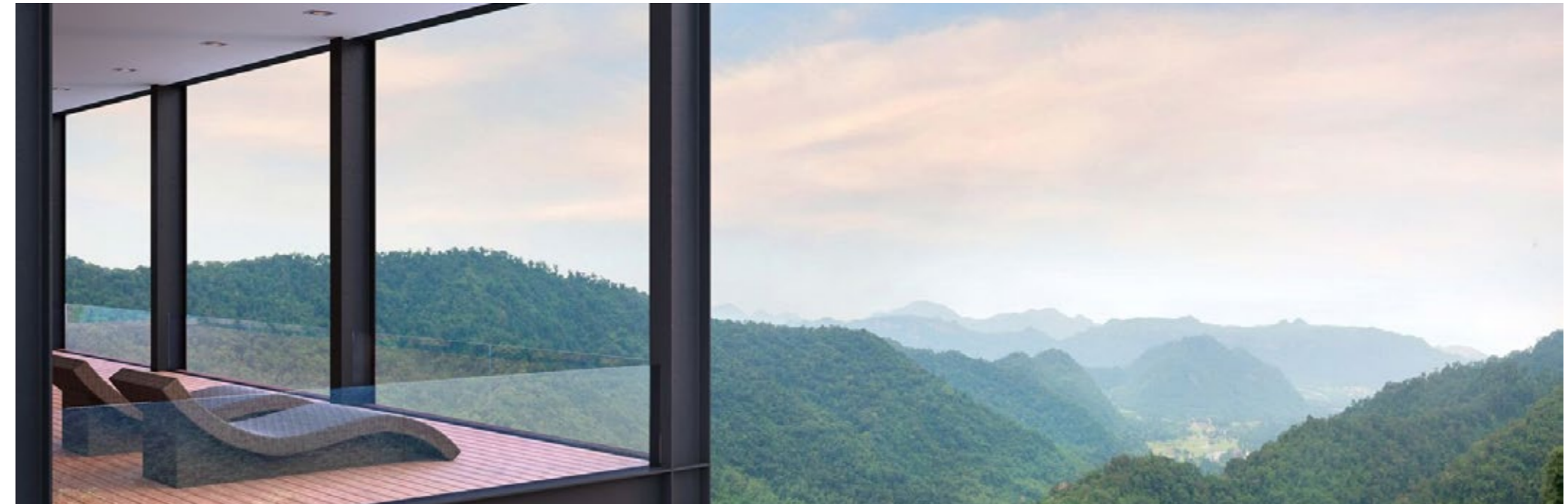
**HOTELS**













PREFABRICATED MODULAR BUILDINGS

OFFICE BUILDINGS



PREFABRICATED MODULAR BUILDINGS



OFFICE BUILDINGS



PREFABRICATED MODULAR BUILDINGS



OFFICE BUILDINGS



PREFABRICATED MODULAR BUILDINGS



OFFICE BUILDINGS

PREFABRICATED MODULAR BUILDINGS

OFFICE BUILDINGS





**EXECUTIVE ACCOMMODATIONS**

**PREFABRICATED MODULAR BUILDINGS**

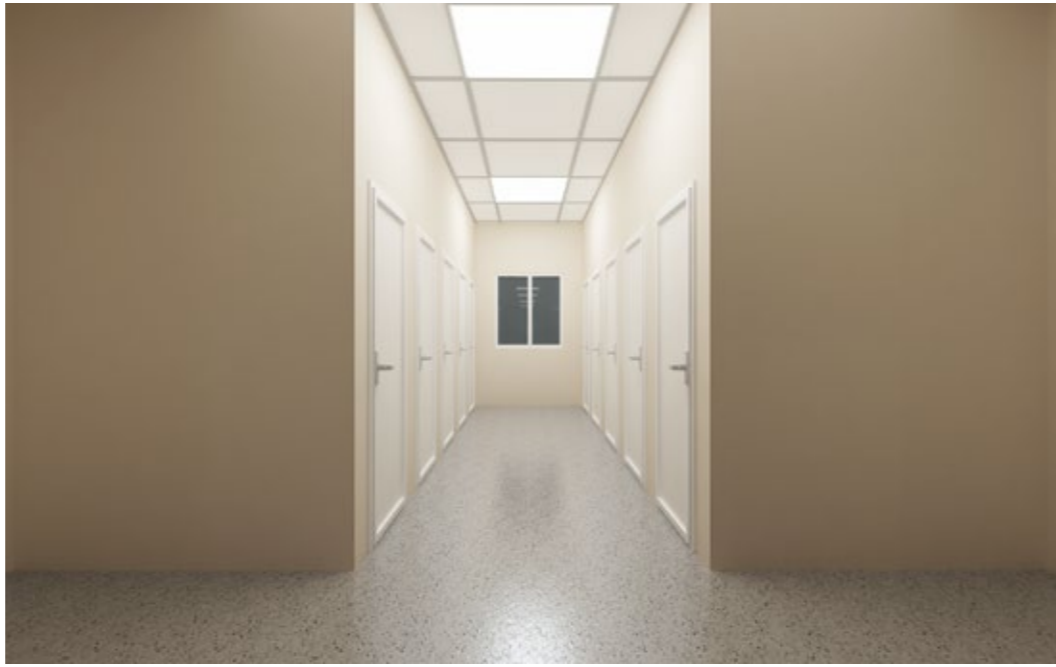
**EXECUTIVE ACCOMMODATIONS**



PREFABRICATED MODULAR BUILDINGS



EXECUTIVE ACCOMMODATIONS



PREFABRICATED MODULAR BUILDINGS



EXECUTIVE ACCOMMODATIONS



**LABOR ACCOMMODATIONS**

**LABOR ACCOMMODATIONS**

**PREFABRICATED MODULAR BUILDINGS**



PREFABRICATED MODULAR BUILDINGS



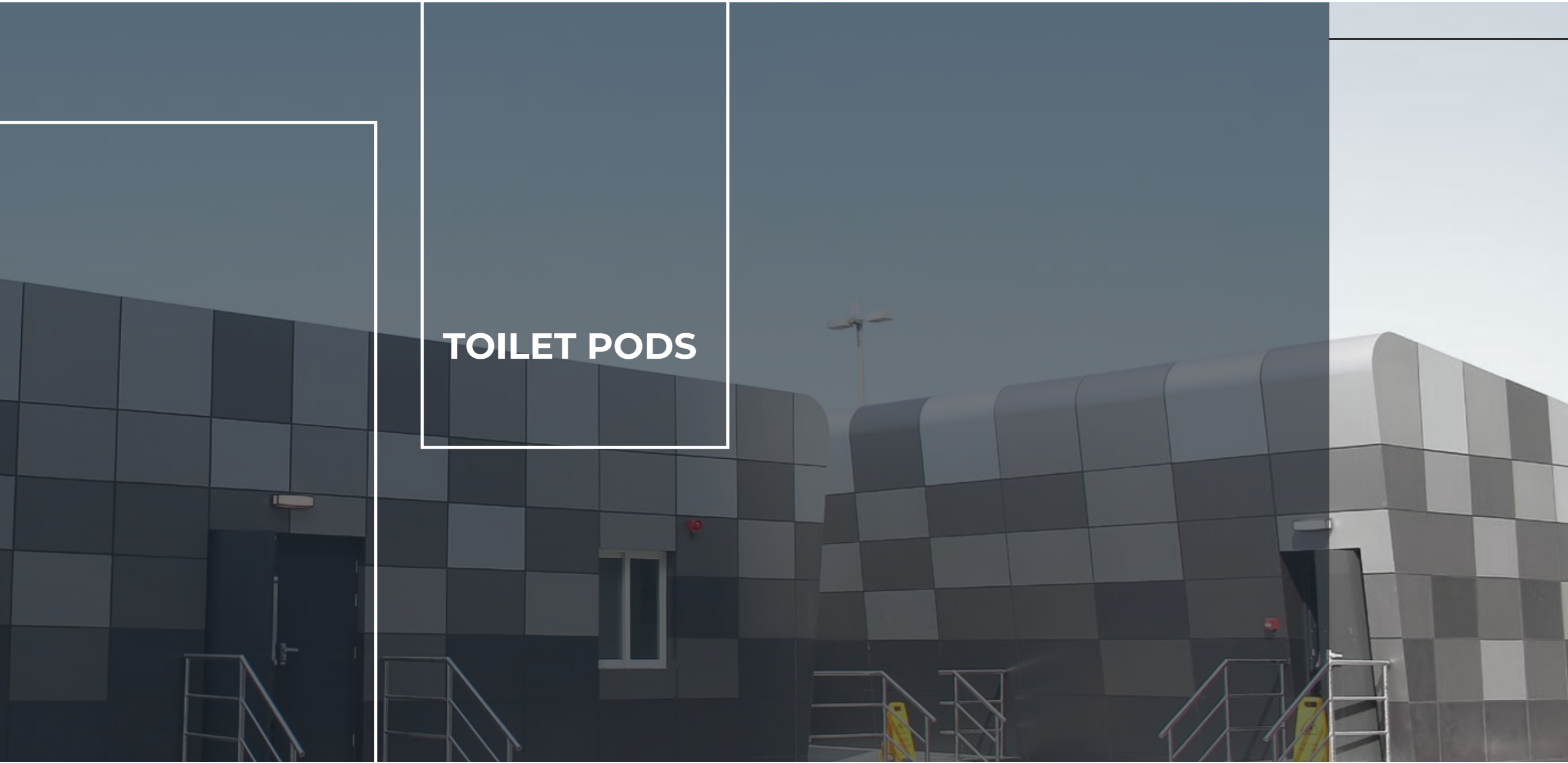
LABOR ACCOMMODATIONS

PREFABRICATED MODULAR BUILDINGS



LABOR ACCOMMODATIONS





TOILET PODS

PREFABRICATED MODULAR BUILDINGS

TOILET PODS



PREFABRICATED MODULAR BUILDINGS



TOILET PODS



PREFABRICATED MODULAR BUILDINGS



TOILET PODS










# STEEL STRUCTURES

# STEEL STRUCTURES

---

Top-tier products and turnkey solutions incorporate design, construction, and all essential elements for diverse facilities, capable of fulfilling any contracting. Experience excellence with our turnkey solutions, covering everything from mechanical and electrical systems to plumbing and climate control.

-  **Quick construction & installation**
-  **Customization & flexibility** in designs
-  **Energy efficient**

-  **Strength & durability**
-  **Sustainable & Environmentally friendly**

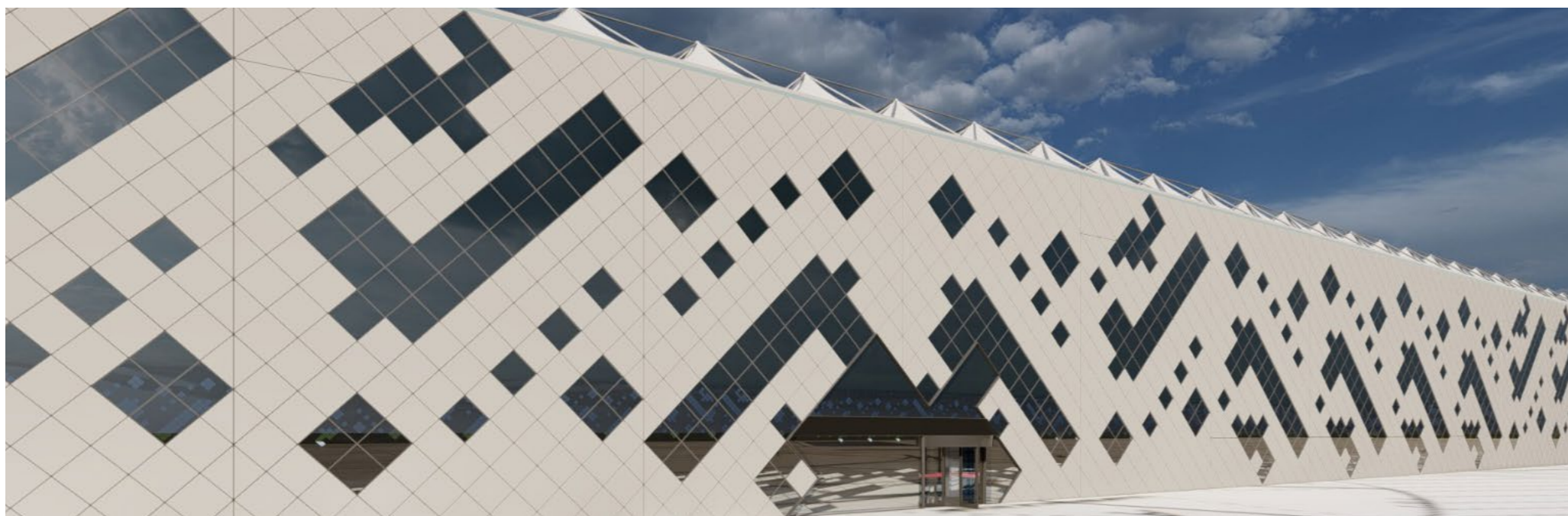
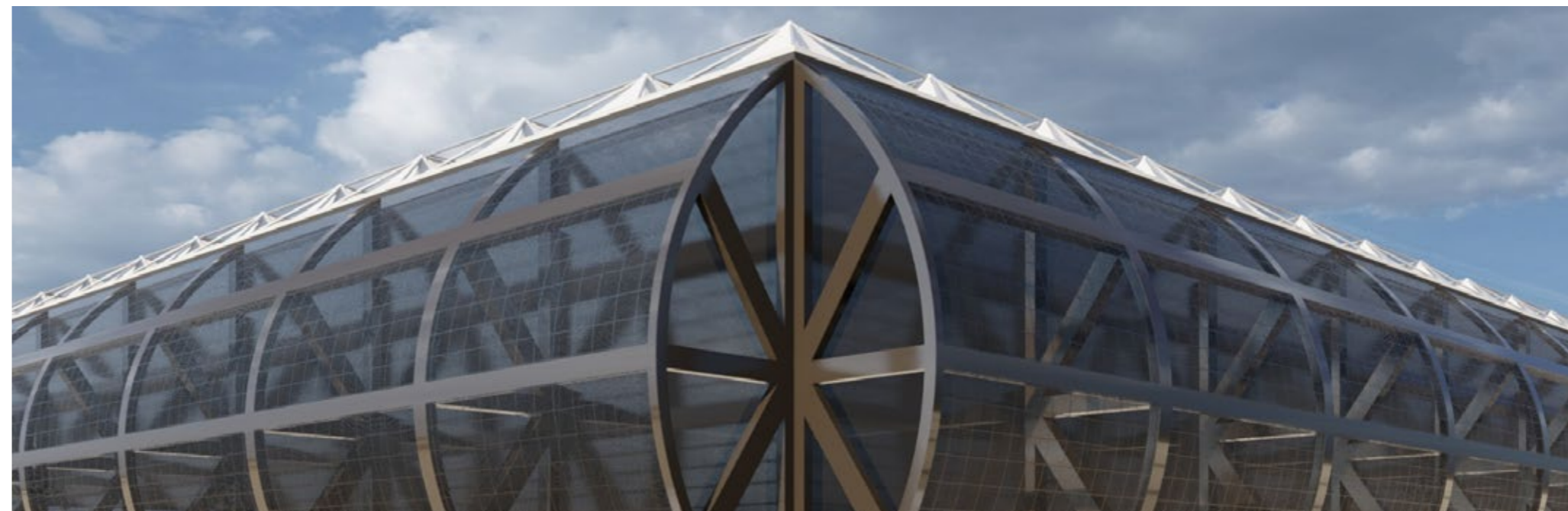


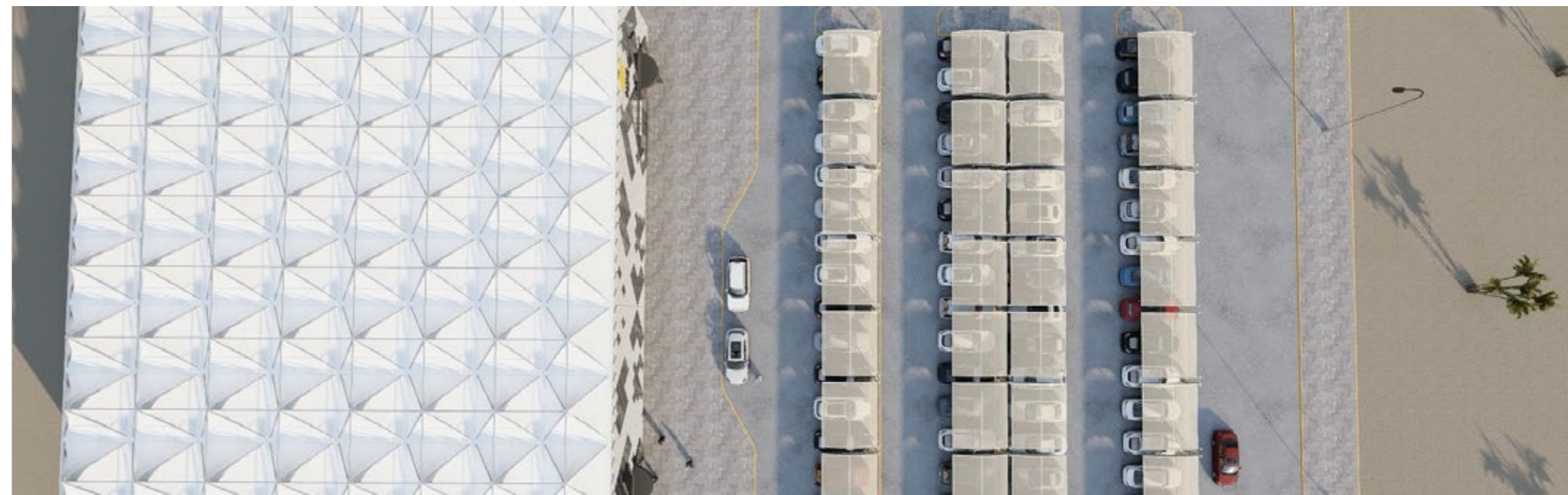


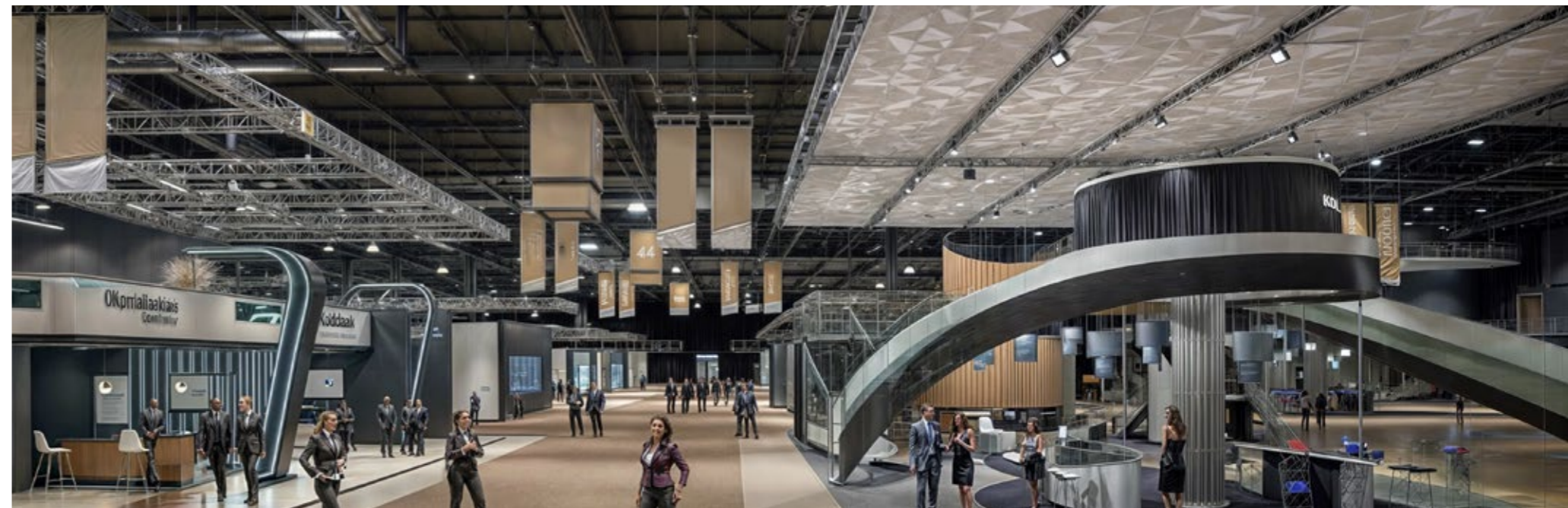
EXHIBITION SPACES

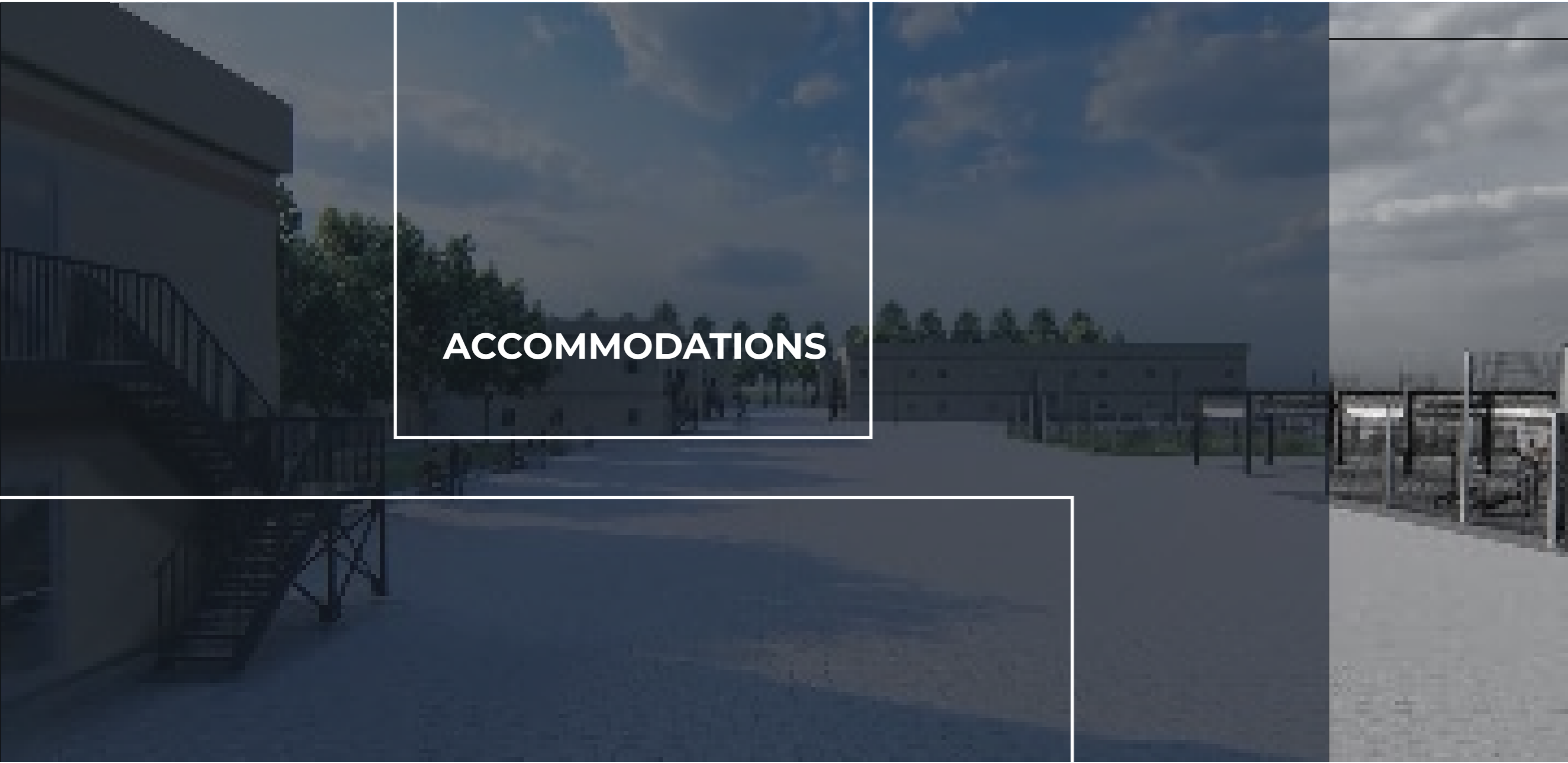
EXHIBITION SPACES











ACCOMMODATIONS

STEEL STRUCTURES

ACCOMMODATIONS



STEEL STRUCTURES



ACCOMMODATIONS

STEEL STRUCTURES

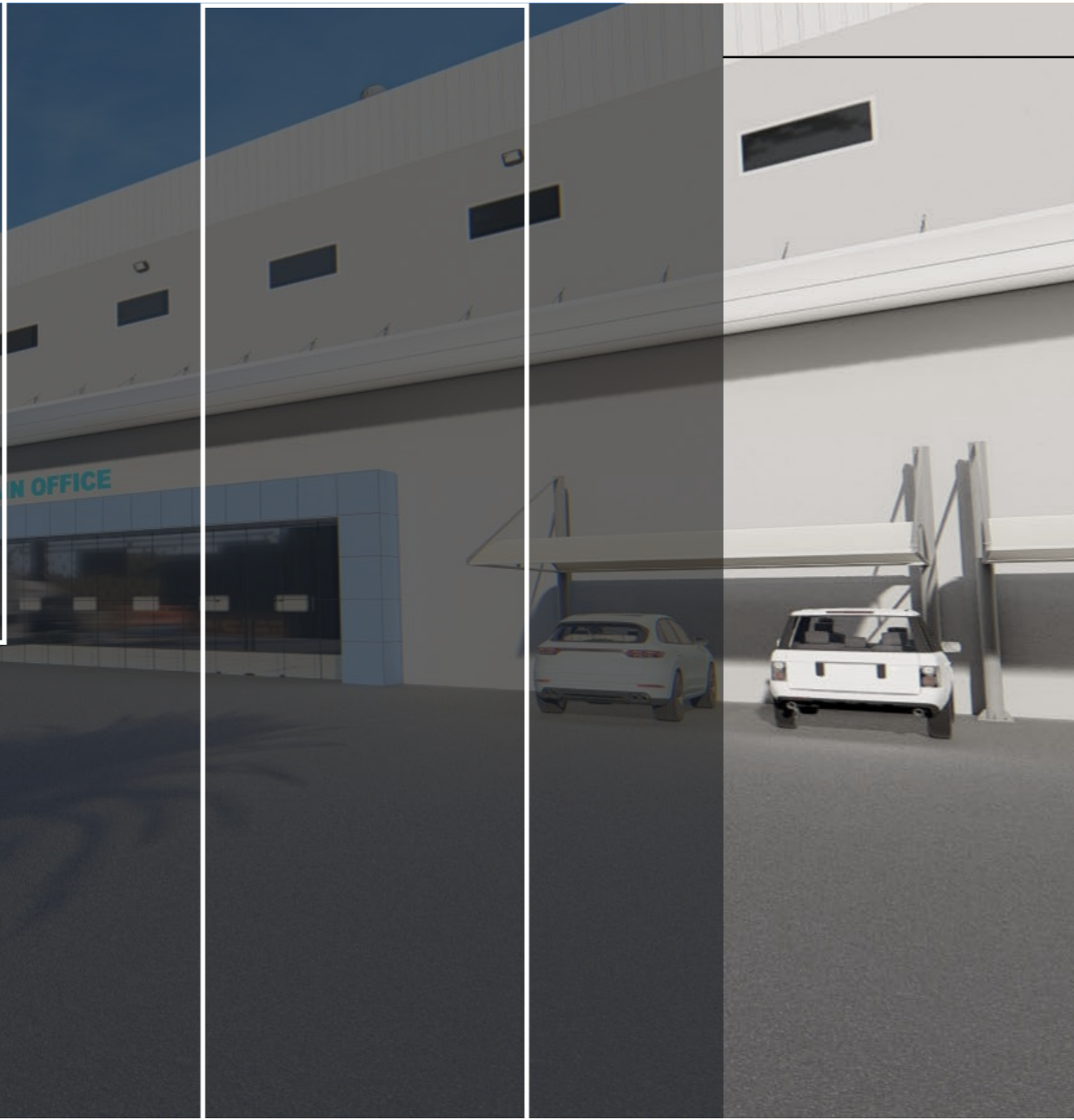


ACCOMMODATIONS





WAREHOUSES



STEEL STRUCTURES

WAREHOUSES

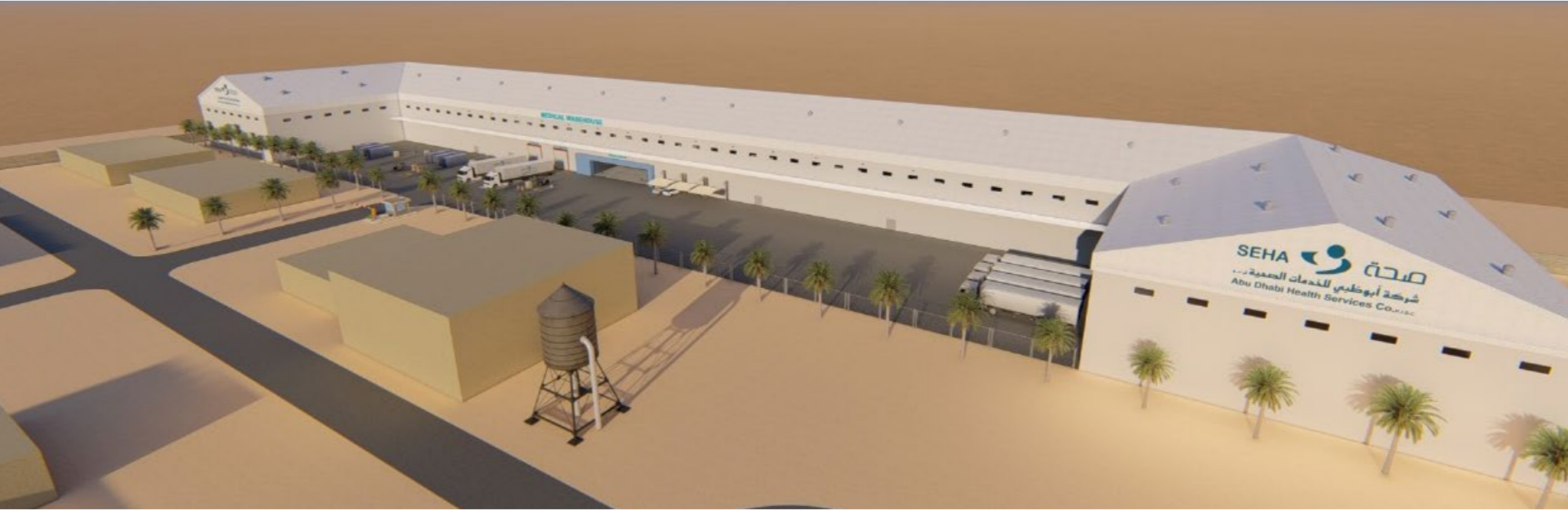


STEEL STRUCTURES

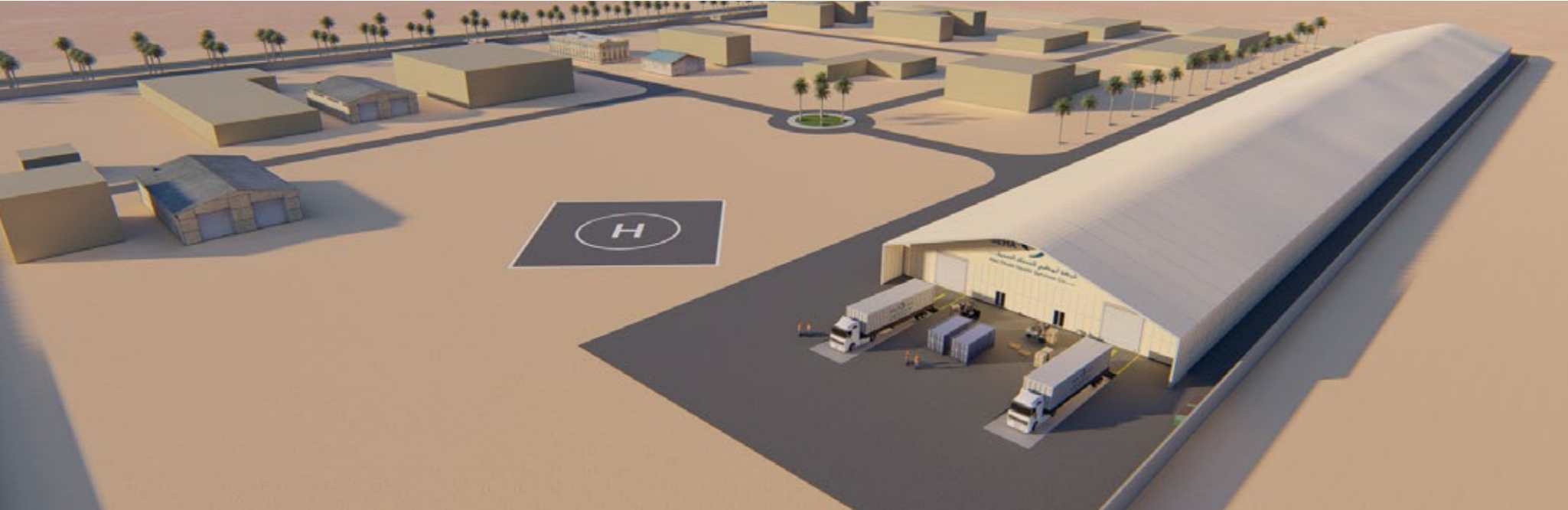


WAREHOUSES

STEEL STRUCTURES



WAREHOUSES



STEEL STRUCTURES



WAREHOUSES

STEEL STRUCTURES



WAREHOUSES



SCHOOLS

SCHOOLS



STEEL STRUCTURES



SCHOOLS

STEEL STRUCTURES



SCHOOLS



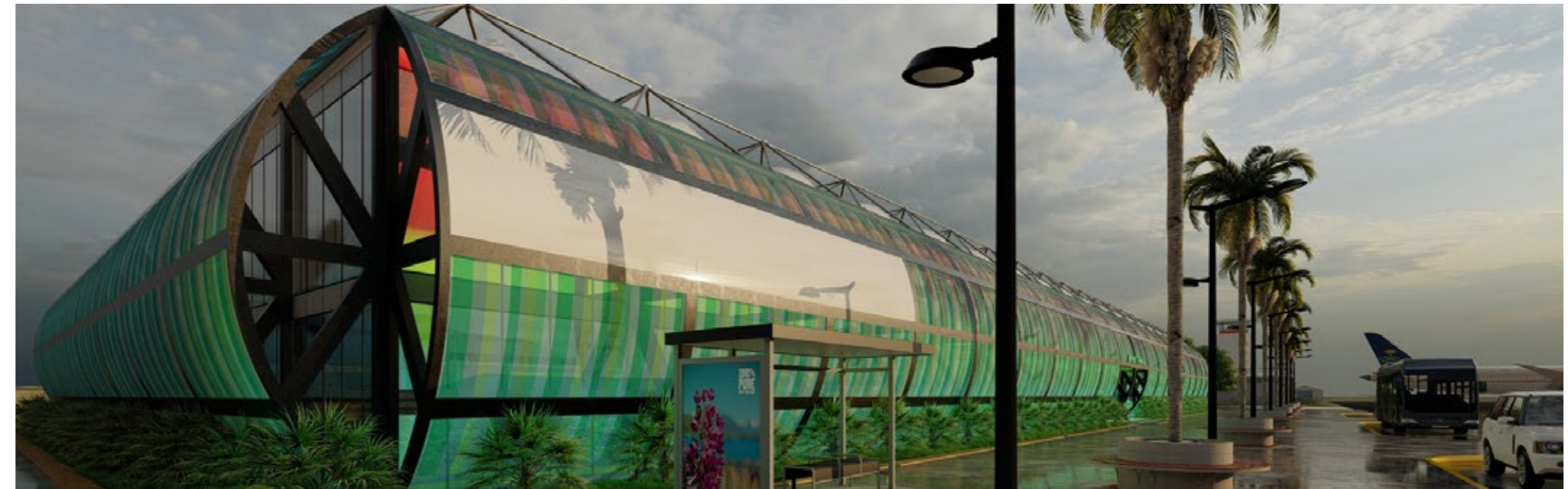


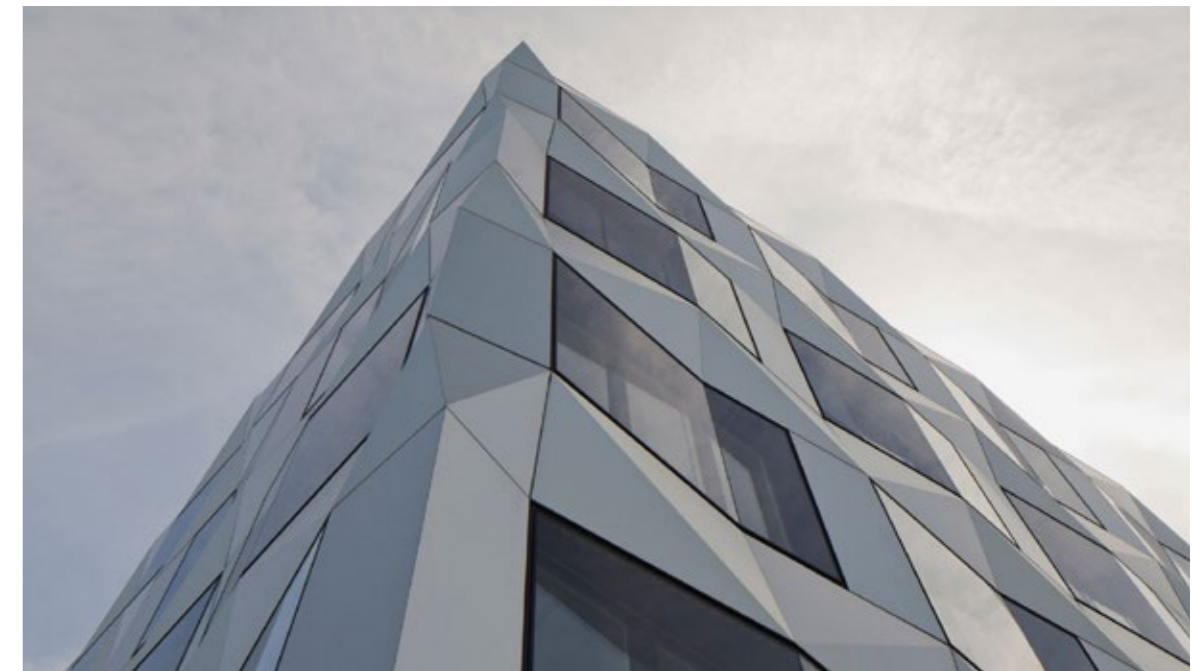
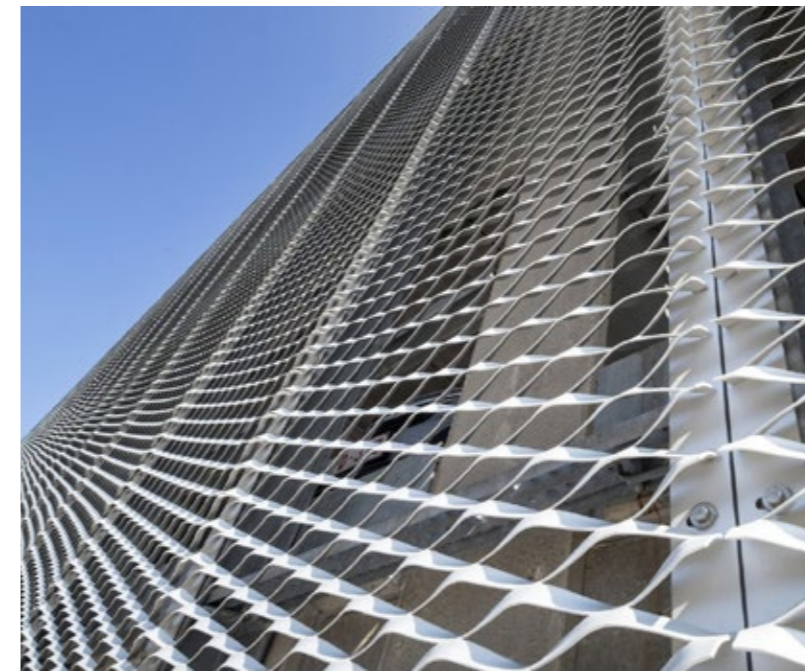
## FAÇADE & CLADDING SOLUTIONS

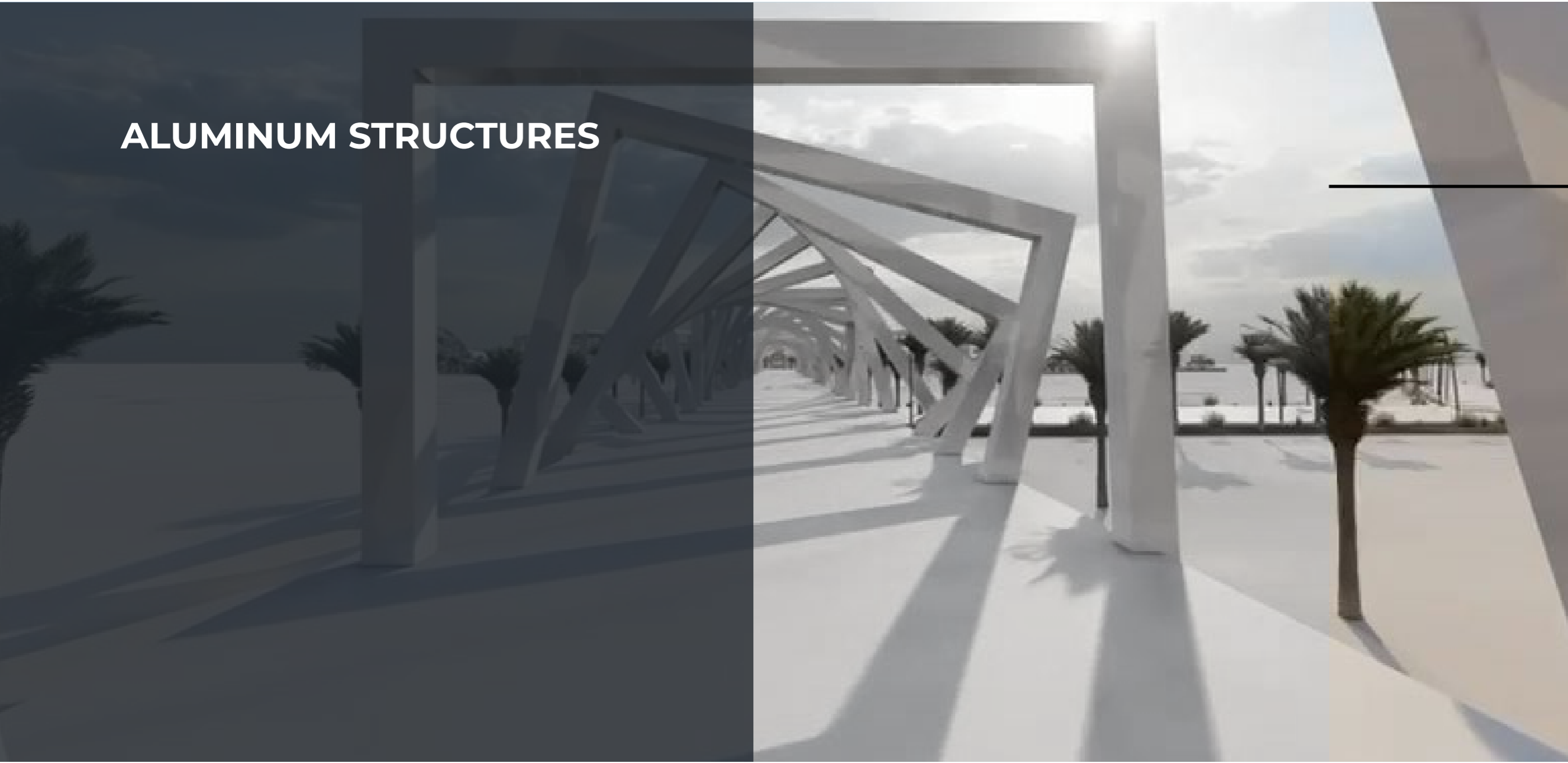

















# ALUMINUM STRUCTURES

# ALUMINIUM STRUCTURES

For sleek, lightweight designs without compromising on strength, our aluminium structures are the epitome of modern construction, light aluminium solid buildings up to G+6. Versatile and aesthetically pleasing, these structures add a touch of sophistication to your projects.

- |   |   |
|---|---|
|  <b>Quick construction<br/>&amp; installation</b>       |  <b>Lightweight</b>               |
|  <b>Customization<br/>&amp; flexibility</b> in designs |  <b>Durability and Longevity</b> |
|  <b>Energy efficient</b>                               |  <b>Low Maintenance</b>          |

# THE WORLD'S LARGEST ALUMINUM STRUCTURE MANUFACTURER

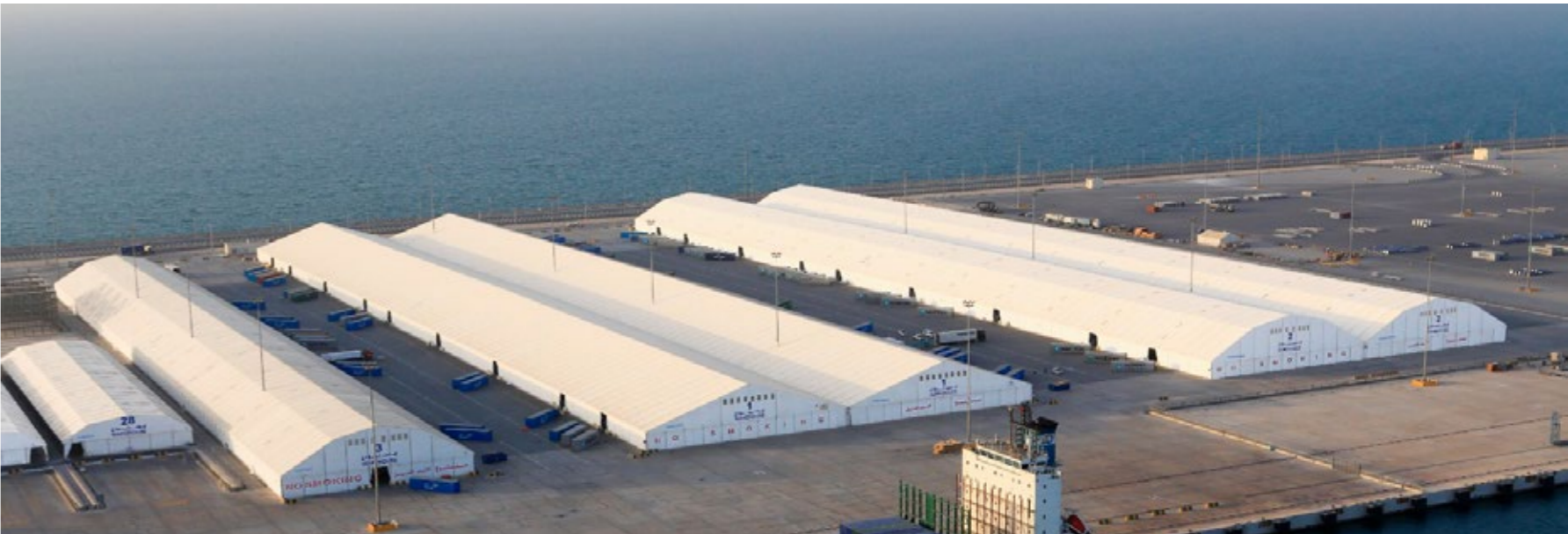
**33,000** tons

Aluminium manufactured per year





WAREHOUSES



WAREHOUSES



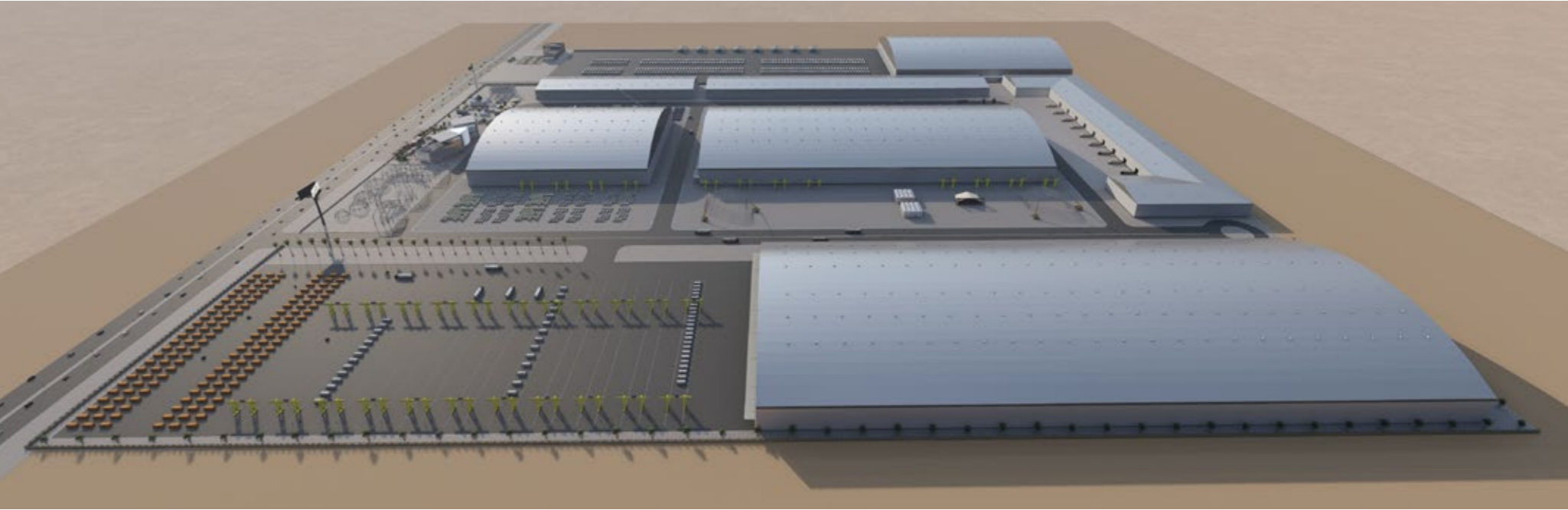
ALUMINIUM STRUCTURES

ALUMINIUM STRUCTURES



WAREHOUSES

ALUMINIUM STRUCTURES



WAREHOUSES





**ALUMINIUM STRUCTURES**

**WELFARE FACILITIES**



ALUMINIUM STRUCTURES



WELFARE FACILITIES



ALUMINIUM STRUCTURES



WELFARE FACILITIES







# HEALTHCARE

# HEALTHCARE

ALBADDAD Healthcare Solutions excels in Fast-Track Construction, ensuring that healthcare facilities are efficiently designed, constructed, and operational in record time. Our streamlined processes and advanced construction methods enable us to deliver high-quality healthcare spaces promptly without compromising safety or functionality.

-  **Quick construction & installation**
-  **Customization & flexibility** in designs
-  Can be made **ready in record time** for **emergency situations**

-  **High quality**
-  **Safe & Functional**

ALUMINIUM STRUCTURES







# CIVIL WORKS

# CIVIL WORKS

For over five decades, we've consistently delivered projects on time, within budget, and to the highest quality standards. ALBADDAB's advanced, vertically integrated supply chain enables us to handle any civil works project, from roads and landscaping to drainage and electrical systems.

 **Experienced Team**

 **Innovation at the Core**

 **Client-Centric Approach**

 **Sustainability Focus**

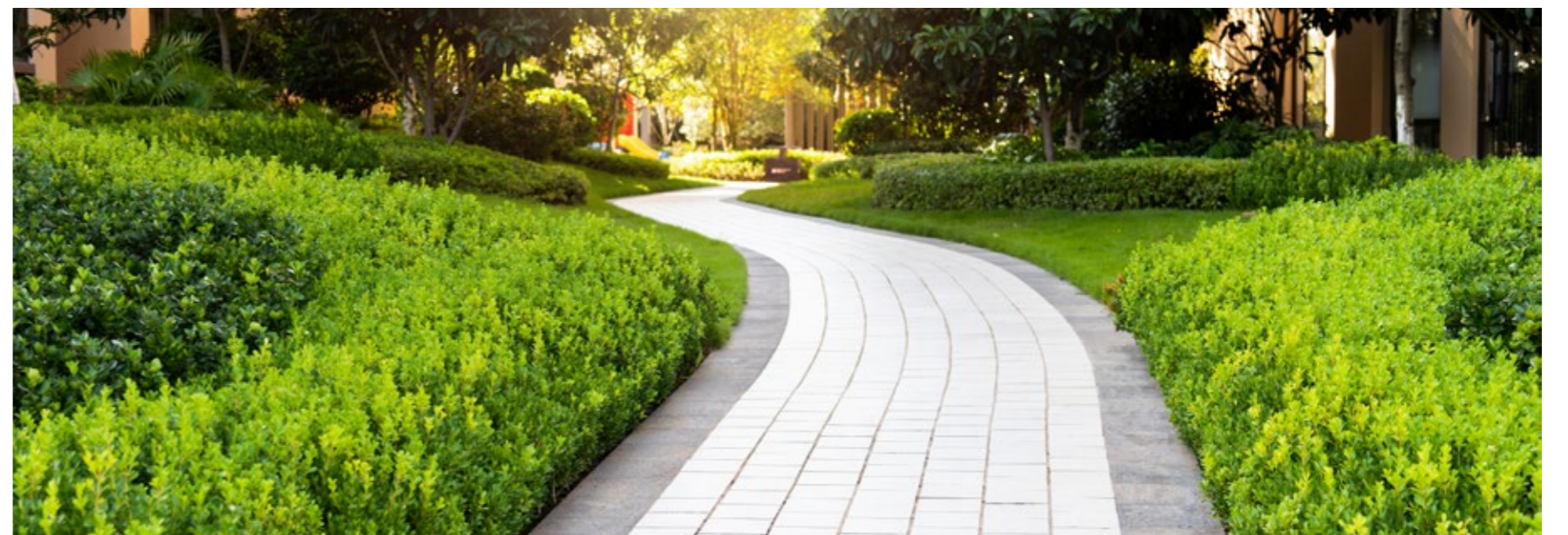
 **Timely Delivery**



LANDSCAPING

CIVIL WORKS

LANDSCAPING







INFRASTRUCTURES

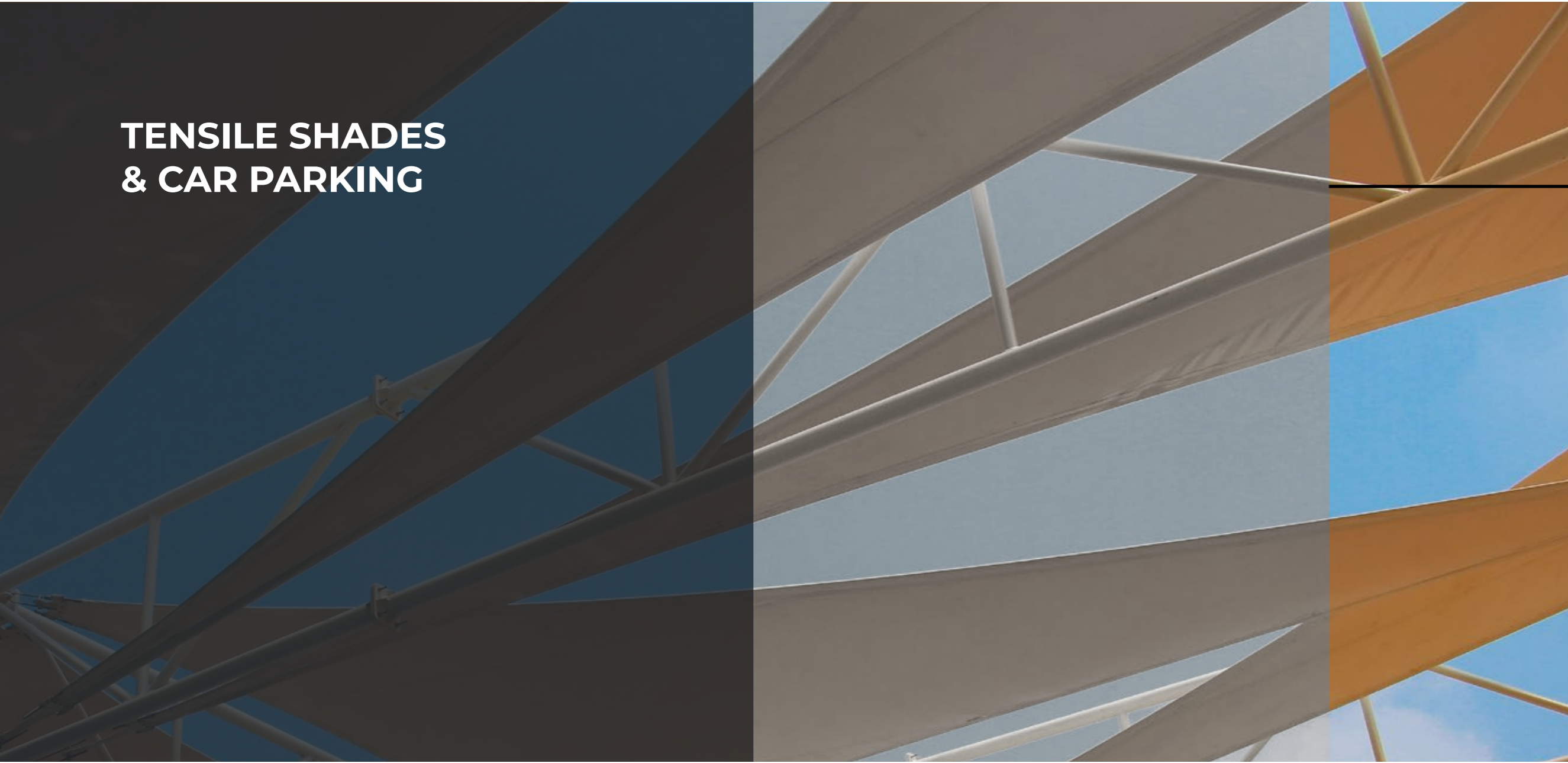


CIVIL WORKS

INFRASTRUCTURES










# TENSILE SHADES & CAR PARKING




# TENSILE SHADES & CAR PARKING

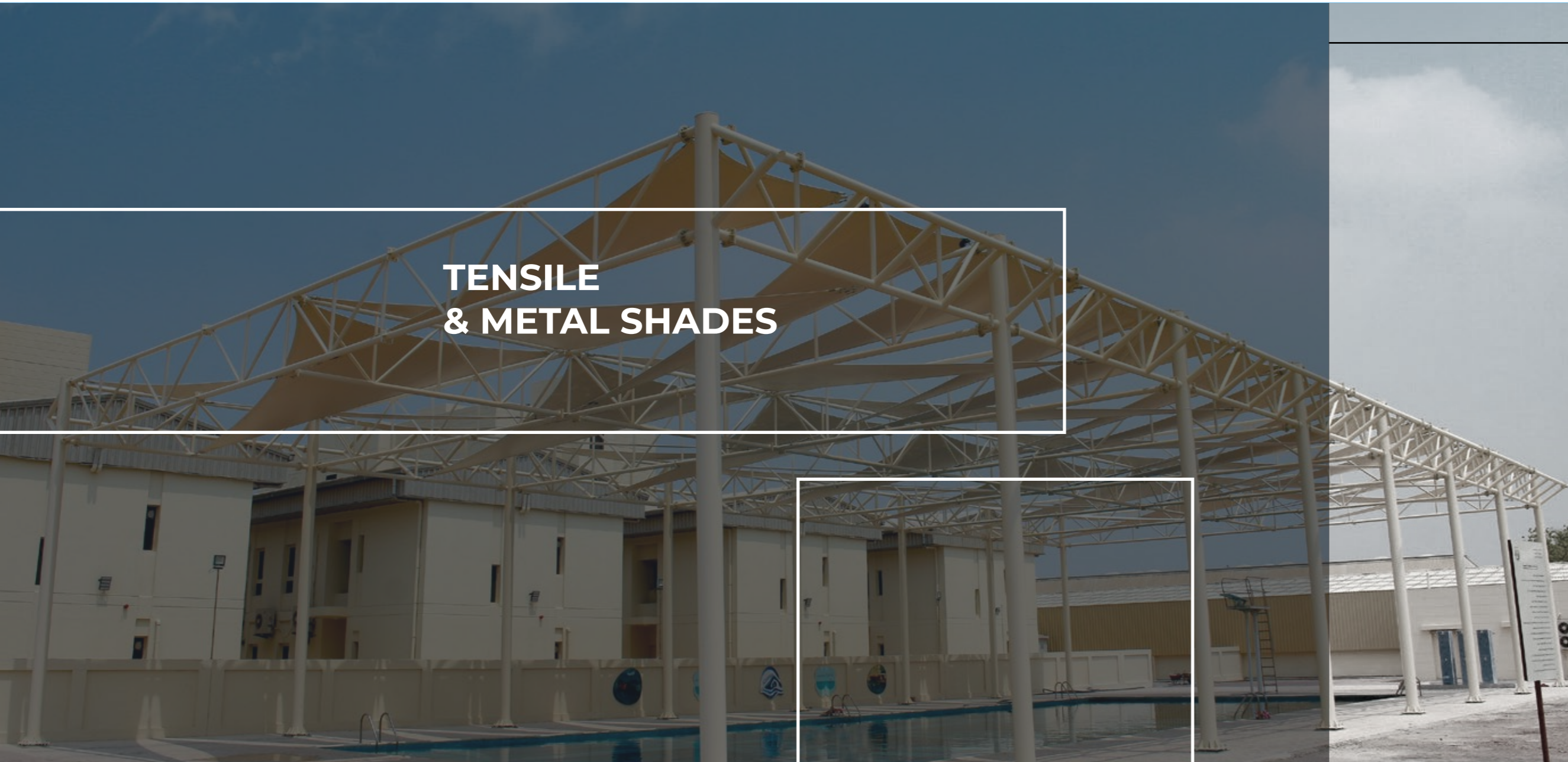
---

ALBADDAD is a leading manufacturer of tensile shed structures. We provide a diverse range of residential and commercial parking solutions, praised for their ease of installation and adaptability to various sizes and designs.

Our stylish structures offer excellent shade for large areas such as auditoriums, warehouses, swimming pools, food courts, and tennis courts. Our range of products includes car parking tensile structure, auditorium tensile structure, tensile membrane structures, and modular tensile structure.

-  **Quick construction & installation**
-  **Customization & flexibility** in designs
-  **Sustainable & Environmentally friendly**

-  **High quality**
-  **Lightweight**
-  **Durability and Longevity**



**TENSILE  
& METAL SHADES**

**TENSILE & METAL SHADES**



**TENSILE SHADES & CAR PARKING**

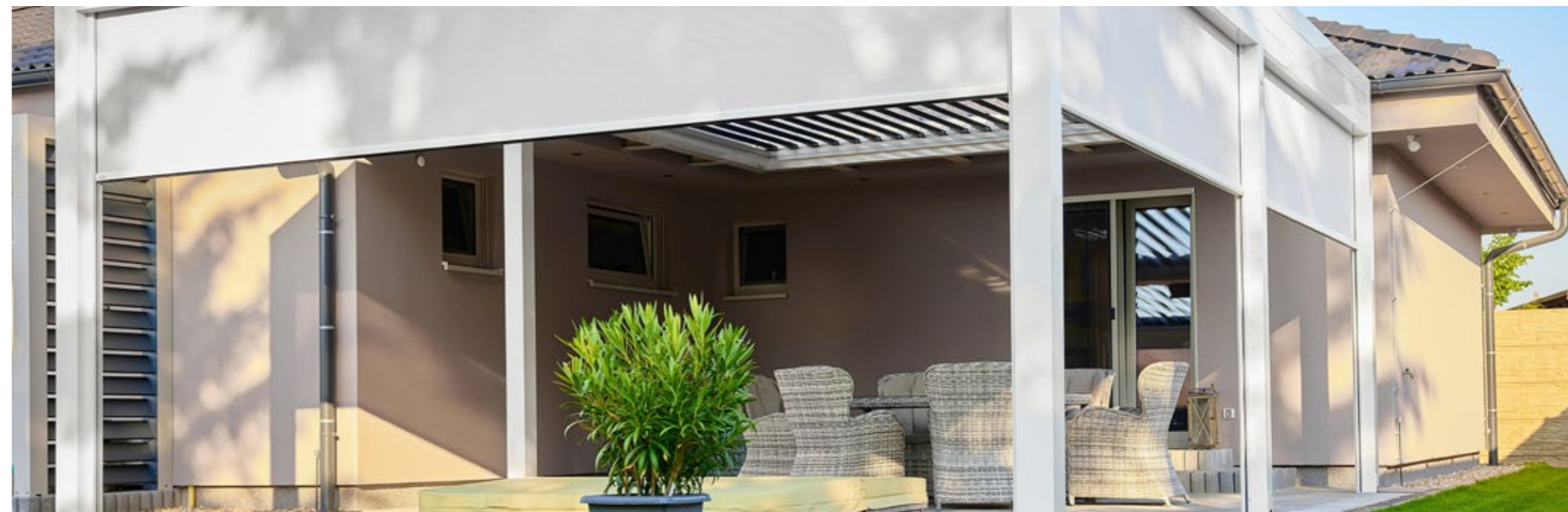


TENSILE & METAL SHADES



TENSILE & METAL SHADES







PARKING SHADES

TENSILE SHADES & CAR PARKING

PARKING SHADES



PARKING SHADES



PARKING SHADES







# MILITARY SOLUTIONS

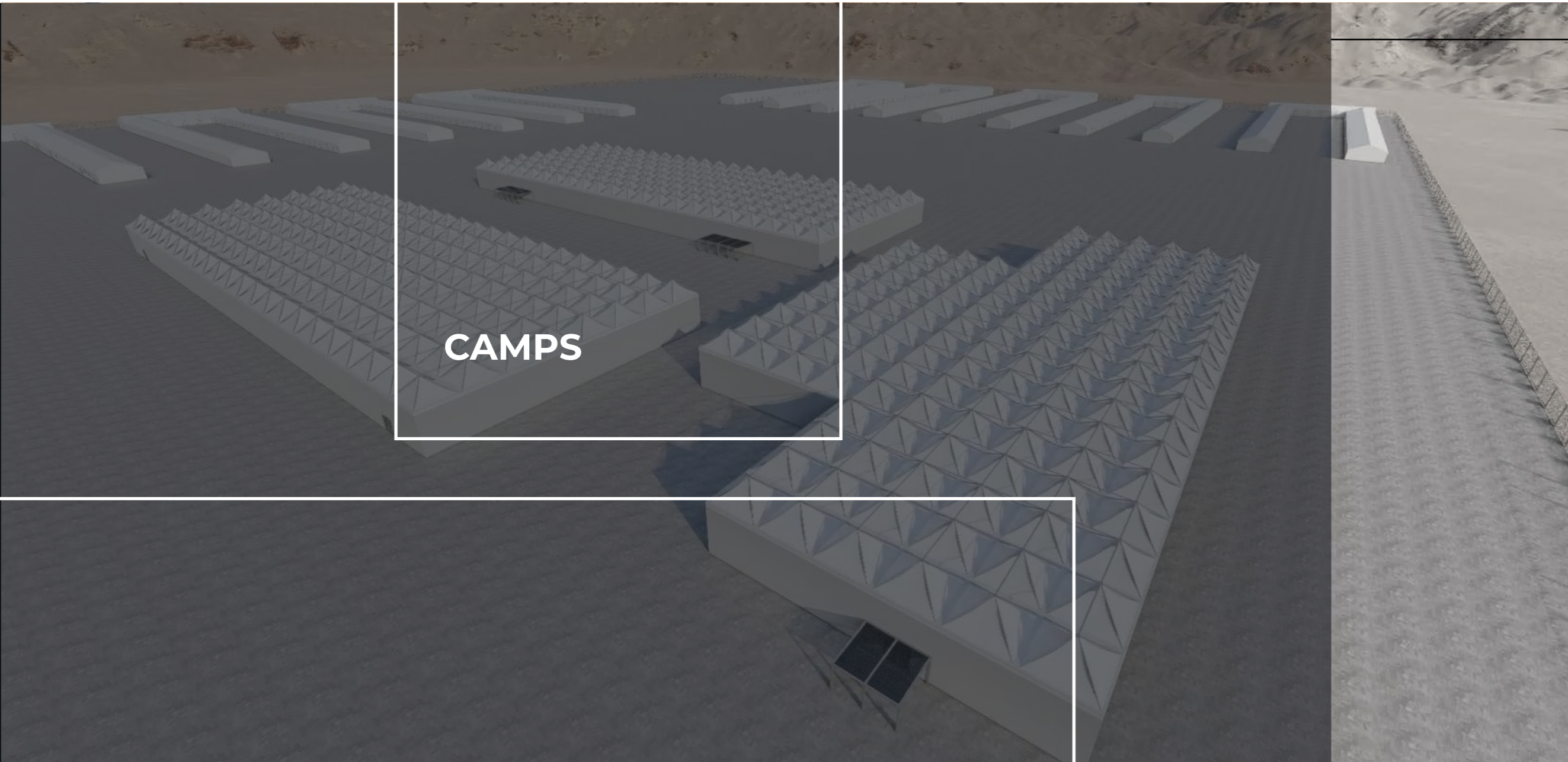
# MILITARY SOLUTIONS

In the military sector, ALBADDAD specializes in highly mobile, temporary, or permanent structures, camps, and aircraft hangars solutions.

Our products, preferred for disaster, military, and relief operations globally for decades, enable rapid and efficient setups. Our Structures can be quickly erected, restructured, and relocated in various climates.

-  **Quick construction & installation**
-  **Customization & flexibility** in designs
-  Can be made **ready in record time** for **emergency situations**

-  **High quality**
-  **Safe & Functional**
-  **Mobility**



CAMPS

MILITARY SOLUTIONS

CAMPS







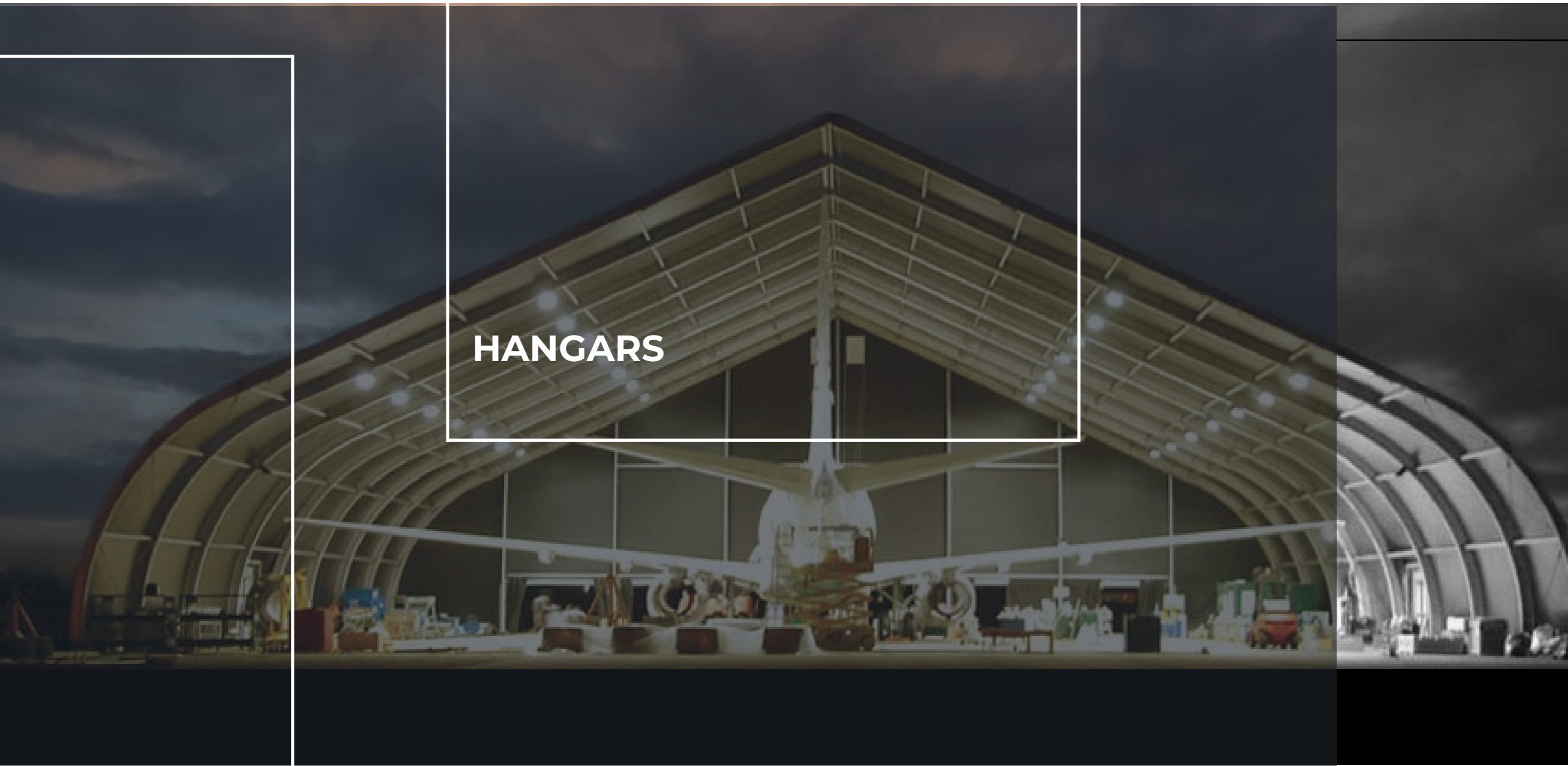
REFUGEE CAMPS

MASTER LAYOUT

MILITARY SOLUTIONS

REFUGEE CAMPS

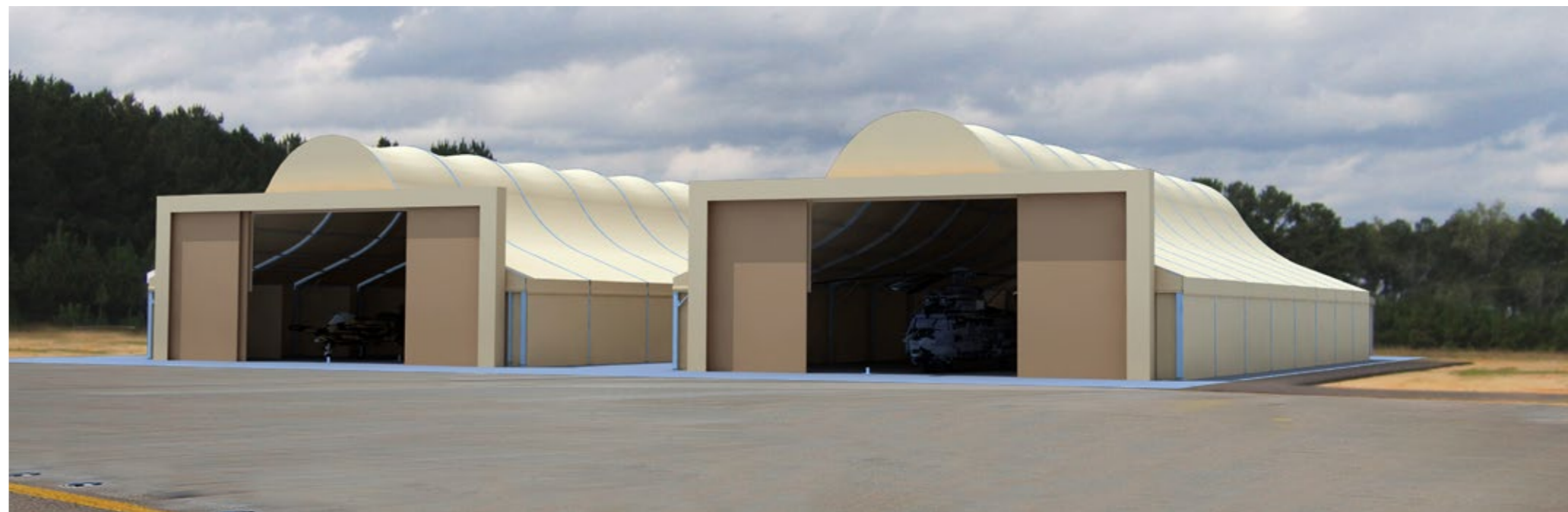


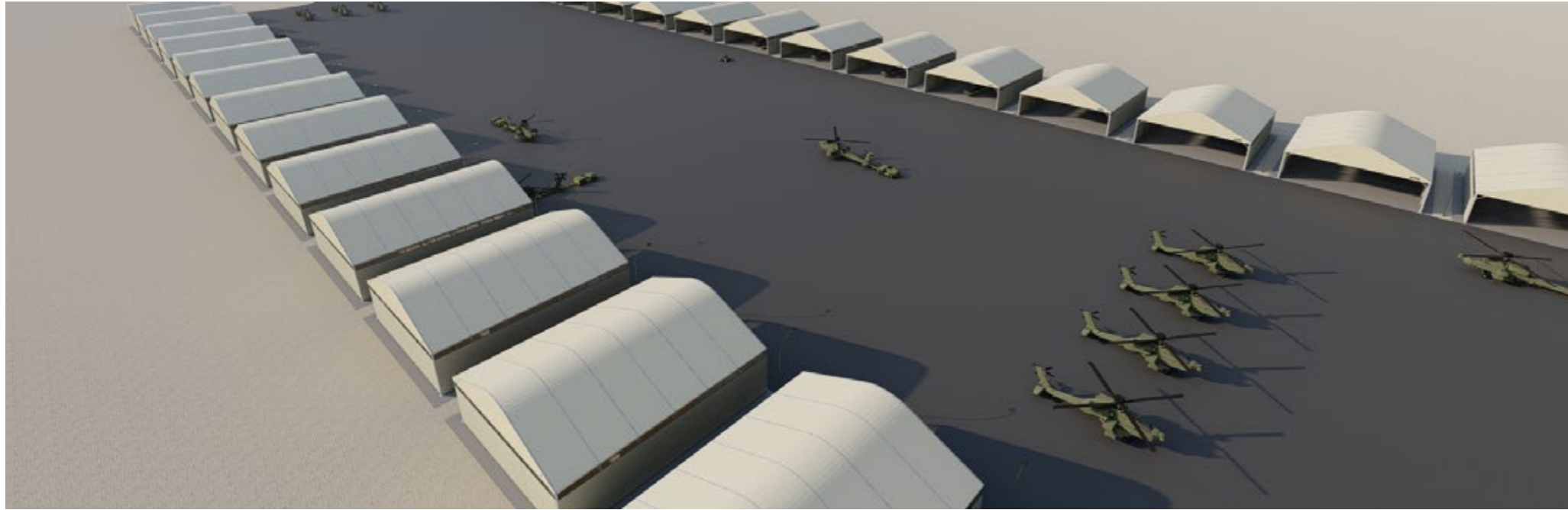


MILITARY SOLUTIONS

HANGARS












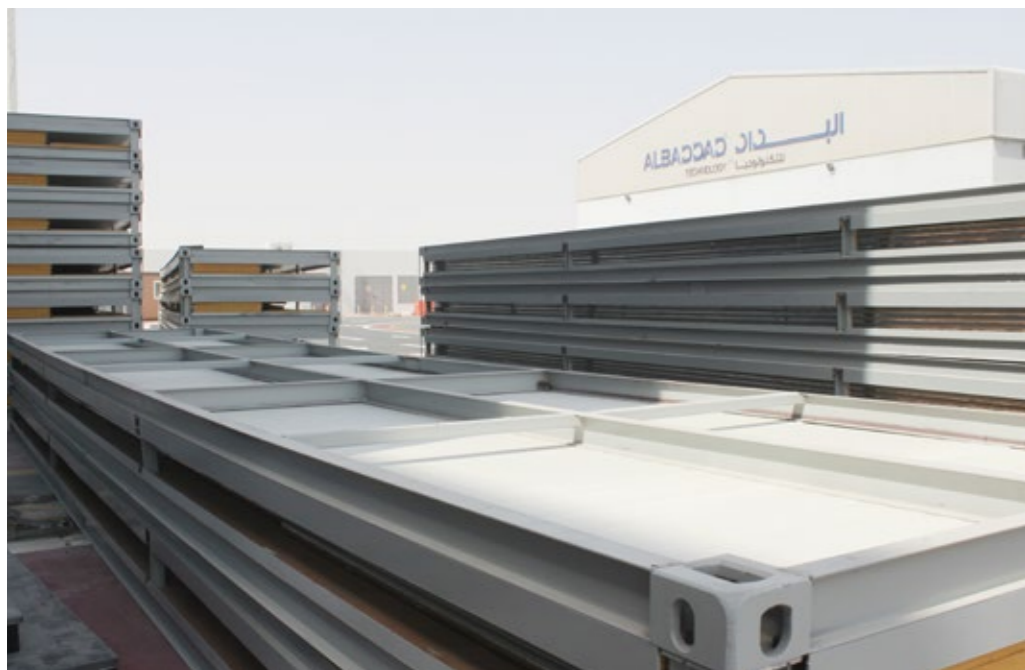
# FLAT PACKS

# FLAT PACKS

Flat pack container cabins offer cost effective transport and rapid assembly. Create complex modular buildings with demountable container modules. Innovative manufacturing technology for special purpose buildings. Advanced off site fabrication delivers cost effective turnkey camp solutions. Light Steel Frame for stylish, high performing, economical homes.

-  **Quick construction & installation**
-  **Customization & flexibility** in designs
-  **Can be connected together**

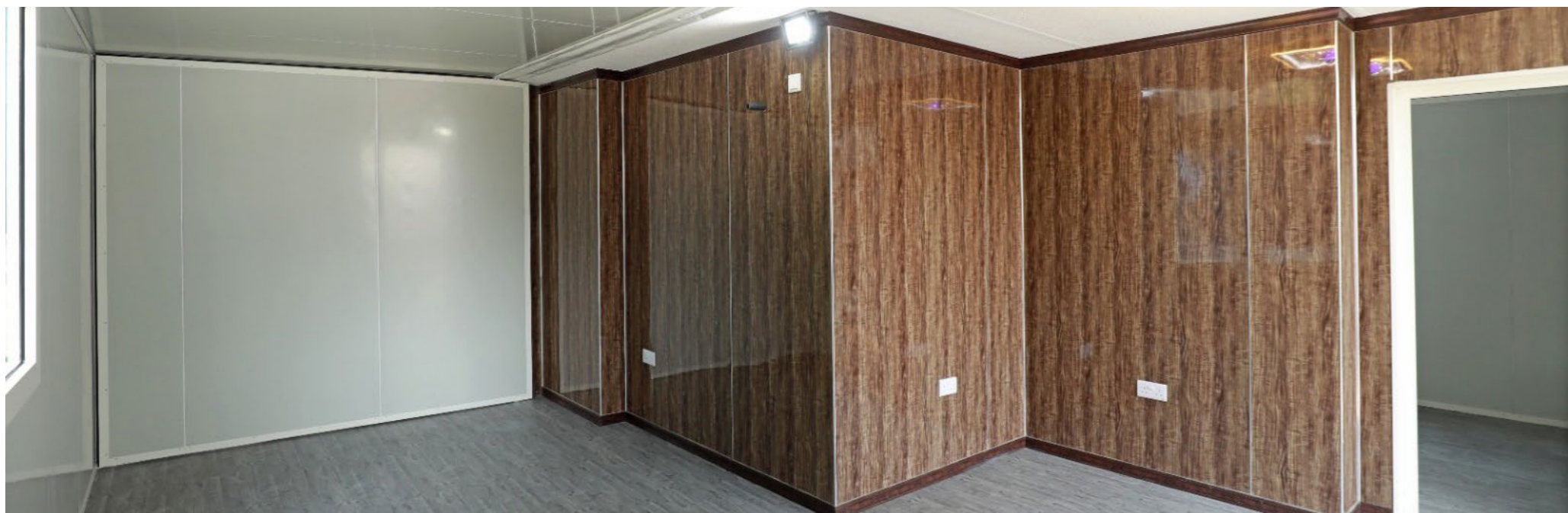
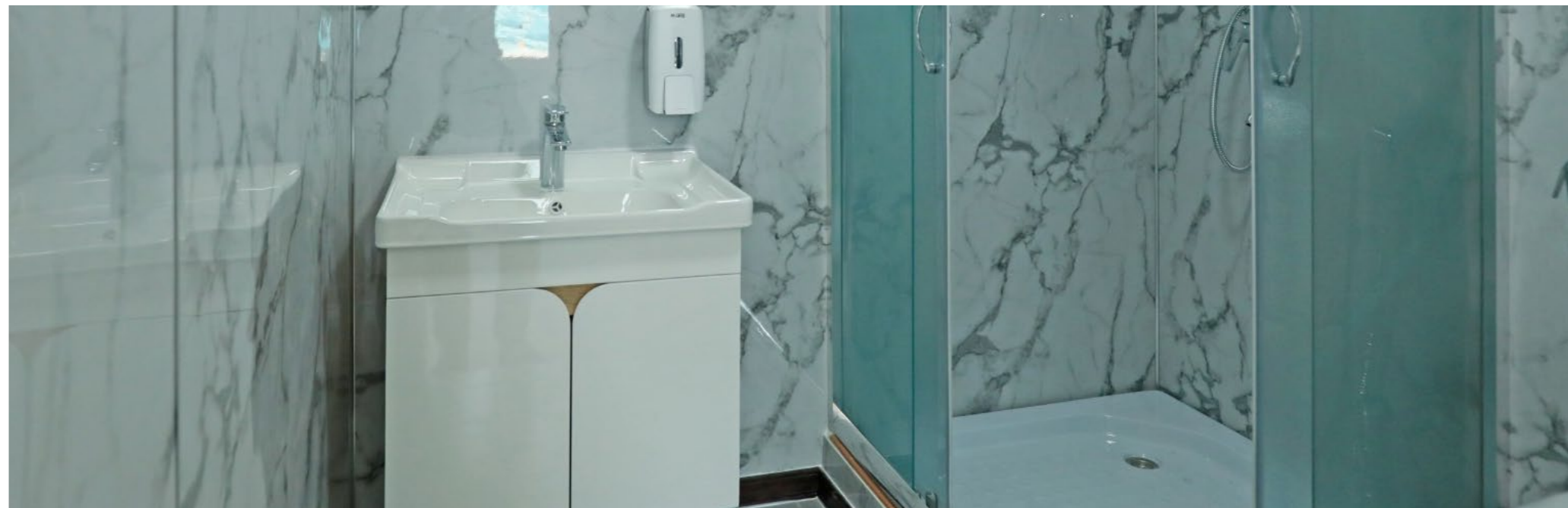
-  **High quality**
-  **Sustainable & Environmentally friendly**
-  **Mobility**



FLAT PACKS



FLAT PACKS





# OIL & GAS SOLUTIONS

# OIL & GAS SOLUTIONS

ALBADDAD caters to the oil and gas extraction industries and petroleum refinery companies. Our structures are utilized for remote accommodation during all phases of petroleum and gas operations, including exploration, drilling, well completion, pipeline installation, and preparation for shipment.

- 

**Quick construction & installation**
- 

**Consistent quality**
- 

**Customization & flexibility** in designs
- 

**Less disruption** on Site





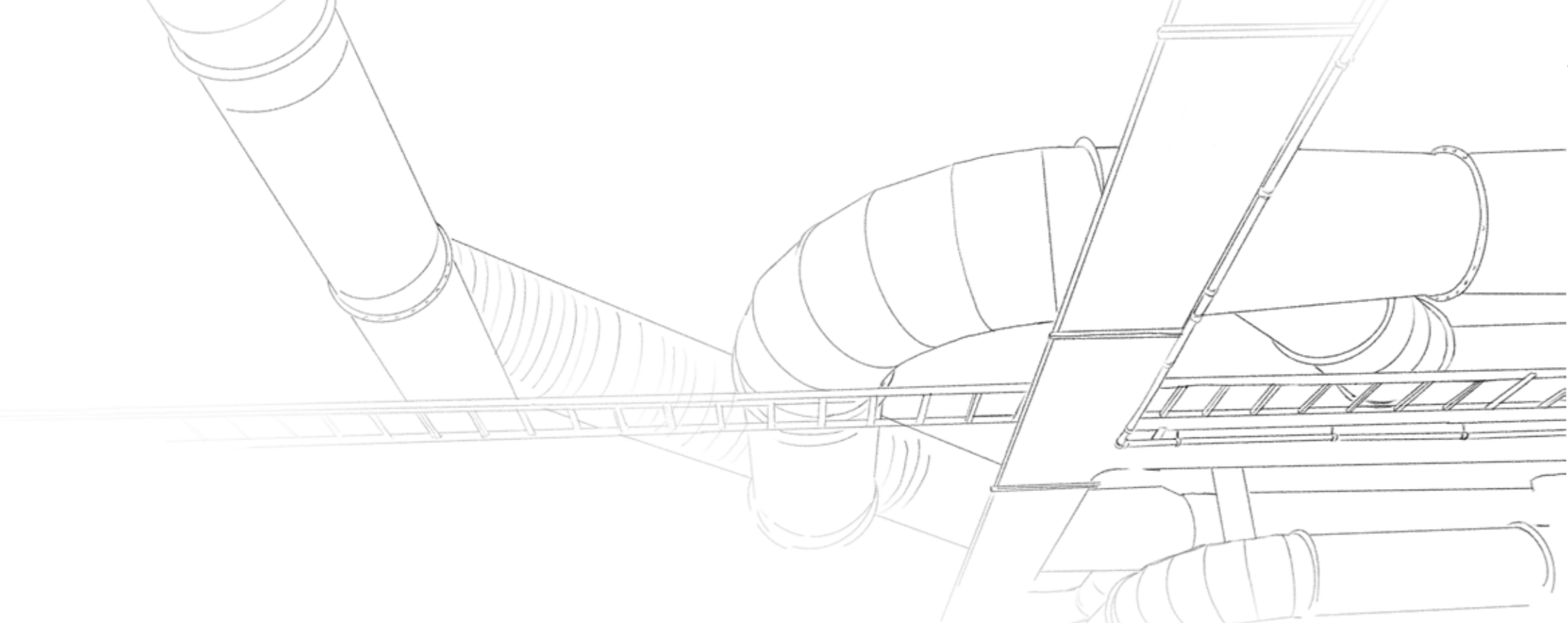
# MEP SOLUTIONS

# MEP SOLUTIONS

Albaddad provides comprehensive MEP engineering solutions, ensuring a smooth transition from conceptualization to execution. Our services include: Mechanical, Electrical, Electro-Mechanical, and Plumbing Solutions

-  **Experienced Team**
-  **Innovation at the Core**
-  **Client-Centric Approach**

-  **Sustainability Focus**
-  **Timely Delivery**



**MECHANICAL SOLUTIONS**

- 1. Ventilation, and Air Conditioning (HVAC)
- 2. Fire Protection Systems
- 3. Elevators and Escalators
- 4. Refrigeration

**ELECTRICAL SOLUTIONS**

- 1. Power Distribution
- 2. Lighting Systems
- 3. Electrical Wiring
- 4. Backup Power Systems
- 5. Renewable Energy Systems

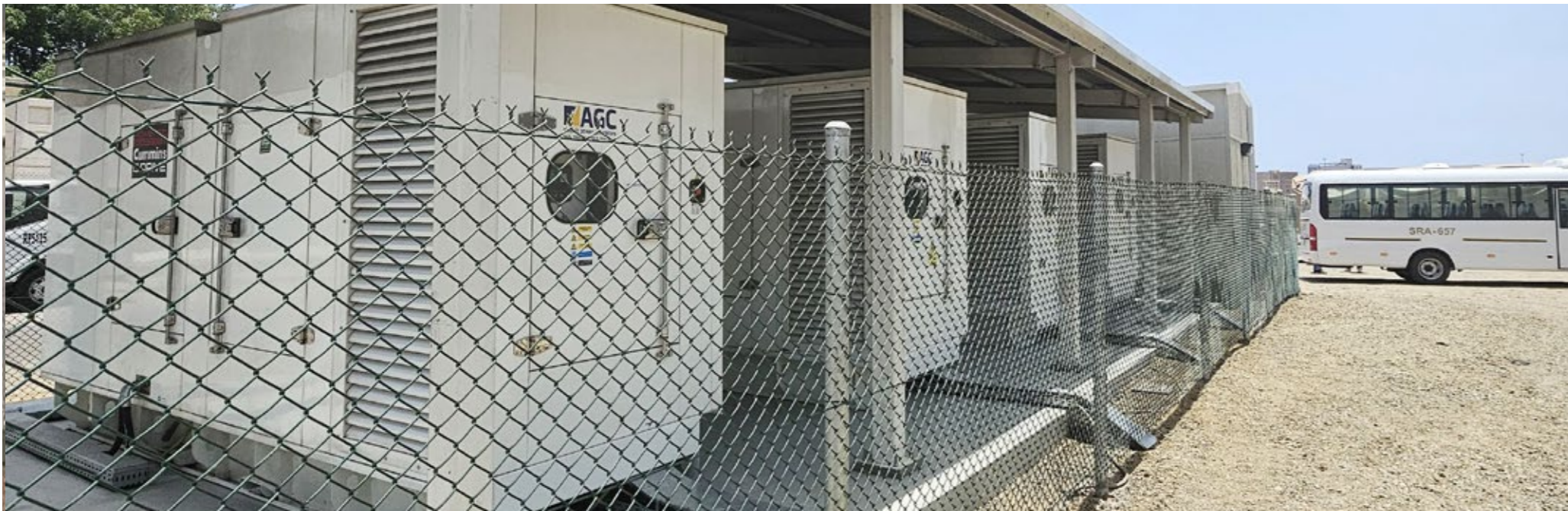
**ELECTRO-MECHANICAL SOLUTIONS**

- 1. Security and Access Control
- 2. Data and Communication Systems
- 3. Audio-Visual Systems

**PLUMBING SOLUTIONS**

- 1. Water Supply Systems
- 2. Drainage Systems
- 3. Gas Supply Systems
- 4. Sanitary Fixtures
- 5. Irrigation Systems





PROJECTS  
FOOTPRINT



- MIDDLE EAST**  
SAUDI ARABIA  
BAHRAIN  
OMAN  
YEMEN  
LEBANON  
JORDAN  
KUWAIT  
UNITED ARAB EMIRATES  
QATAR  
PALESTINE

- AFRICA**  
MOROCCO  
MAURITANIA  
ALGERIA  
TUNISIA  
LIBYA  
EGYPT  
TANZANIA  
CONGO  
CHAD  
NIGER  
ANGOLA

- CAMEROON  
NIGERIA  
TOGO  
GHANA  
COTE D'IVOIRE  
GUINEA  
MALI  
SENEGAL  
ETHIOPIA  
DJIBOUTI  
SOMALIA

- EUROPE**  
PORTUGAL  
SPAIN  
AUSTRIA  
ITALY  
GREECE  
RUSSIA  
GEORGIA  
ARMENIA  
TURKEY

- NORTH AMERICA**  
USA  
MEXICO
- SOUTH AMERICA**  
BRAZIL

- ASIA**  
INDIA



@albaddad



@albaddad1971



[www.albaddad.com](http://www.albaddad.com)