

ALBADDAD¹⁹⁷¹

INFLATABLE TENTS

Rapid Deployment, Maximum Impact



WORLD
Under
one roof

WHY CHOOSE INFLATABLE TENTS



DURABLE AND RESILIENT

Engineered for harsh environments with UV-resistant, flame-retardant, waterproof, and tear-resistant materials.



SUPERIOR INSULATION

Advanced thermal and acoustic insulation reduces heating and cooling demands.



MODULAR AND CUSTOMIZABLE

Scalable designs allow flexible configurations to suit diverse operational needs.



QUICK SETUP

Assembles within minutes for rapid deployment.



STRONG & COMPACT

Reinforced PVC-coated materials rival metal frames in strength while remaining easy to transport.



ENHANCED COMFORT

Features ventilation windows, natural lighting, and insect-proof screens for optimal usability.

**ALL OUR INFLATABLE TENTS CAN EASILY BE CONNECTED
TO ONE ANOTHER IN VARIOUS CONFIGURATIONS.**

APPLICATION AREAS



Field Hospitals &
First Aid Stations



Police Operations &
Command Centers



Decontamination
Units & Hazardous
Material Operations



Weatherproof
covers for sensitive
equipment



Military
Accommodation &
Command Centers



Catering & Dining
Facilities



Civil Defense &
Emergency Response
Operations



Emergency Relief
Shelters for All
Disasters

ARZ Series

Lite Duty, Low Pressure Air
Shelters



KEY FEATURES



Interconnectable by Design: Modular structure for seamless expansion.



Durable Materials: Flame-retardant, UV-resistant, and airtight fabric.



Rapid Deployment: Setup in 1.5–4 minutes (depending on size) by 1 person using an electric blower or compressed air.



Customizable Options: Includes partition walls, side windows, branding, lighting, air-conditioning and more.



Military-Grade Durability: Optional fabric upgrade for demanding environments.



Easily Detachable: Can be removed/ replaced quickly in case of repairs or replacements.



Fastened with Velcro: Tent skin is connected to the floor with velcro

TECHNICAL DETAILS

FRAME MATERIAL

Seams of the frame are HF welded and the corner joints are mitered. Lightweight fabric (0.85 kg/m²), optimized for compressed air bottles.

FLOOR MATERIAL

Flame retardant, waterproof and mildew resistant, PVC-coated polyester (0.55–0.85 kg/m²). Tear-resistant with optional non-slip embossing.

COLOR OPTIONS

11 standard colors, with custom requests available.

ARZ SERIES | LOW PRESSURE TENTS



PACKING SIZE: 120 X 100 X 74 CM

WEIGHT: 32 - 173 KG

| | ARZ 5 | ARZ 10 | ARZ 204 | ARZ 20 | ARZ 30 | ARZ 40 | ARZ 50 | ARZ 60 |
|--------------|--------|--------|---------|--------|--------|--------|--------|---------|
| Width | 3.40 m | 3.20 m | 4.00 m | 5.50 m | 5.50 m | 5.50 m | 5.50 m | 5.50 m |
| Length | 1.75 m | 3.40 m | 5.00 m | 3.90 m | 5.72 m | 7.55 m | 9.38 m | 11.21 m |
| Eaves height | 2.30 m | 2.20 m | 2.00 m | 2.00 m | 2.00 m | 2.00 m | 2.00 m | 2.00 m |
| Ridge height | 2.76 m | 2.80 m | 2.80 m | 2.95 m | 2.95 m | 2.95 m | 2.95 m | 2.95 m |

AZF Series

Medium Duty, Low Pressure
Inflatable Shelters



KEY FEATURES



Rapid Deployment: Setup in 4–7 minutes by 1 or 2 people using an electric inflator



Robust Construction: Flame-resistant, waterproof, and mildew-resistant.



Modular Design: Interconnectable in any direction with vertical wall option to maximize interior space.



All-Terrain Use: Suitable for diverse climates and terrains.



Pressure Relief Valve: Prevents excessive pressure in the frame



Easily Detachable: Can be removed/ replaced quickly in case of repairs or replacements.

TECHNICAL DETAILS

FRAME MATERIAL

Self-erecting inflatable arc with modular components for easy replacement. Made of airtight double-sided PVC-coated polyester fabric (1.10 kg/m²). Includes aluminum spacers and a pressure relief valve for safety.

TENT SKIN

Double-sided PVC-coated polyester fabric (0.75 kg/m²), flame-resistant, waterproof, and mildew-resistant.

FLOOR

PVC-coated polyester fabric (0.75–0.85 kg/m²) with an optional non-slip surface.

ADDITIONAL FEATURES

Includes windows on each side, 8 passages (Ø425) for heating, and cable ducts (2+2 at each gable)

AZF SERIES | LOW PRESSURE



- AIR BEAMS DIAMETER: 35 CM
- RIDGE PURLINS DIAMETER: 35 CM
- OPERATING PRESSURE: 0.3 BAR
- WIND RESISTANCE: 100 KM/H
- SNOW LOAD RESISTANCE: 20 KG/M³

| | AZF 29 | AZF 42 | AZF 56 | AZF 6-33 | AZF 6-48 | AZF 6-63 | AZF CT 33 | AZF S 28 | AZF S 41 | AZF S 55 |
|--------------|-----------|-----------|-----------|-------------|-------------|-------------|--------------|-------------|-------------|-------------|
| Width | 5.60 m | 5.60 m | 5.60 m | 6.30 m | 6.30 m | 6.30 m | 6.00 m | 5.50 m | 5.50 m | 5.50 m |
| Length | 5.15 m | 7.55 m | 9.95 m | 5.15 m | 7.55 m | 9.95 m | 6.00 m | 5.15 m | 7.55 m | 9.95 m |
| Eaves height | 2.20 m | 2.20 m | 2.20 m | 2.40 m | 2.40 m | 2.40 m | 2.15 m | 2.25 m | 2.25 m | 2.25 m |
| Ridge height | 2.80 m | 2.80 m | 2.80 m | 3.15 m | 3.15 m | 3.15 m | 3.40 m | 3.08 m | 3.08 m | 3.08 m |

AZM Series

Medium Duty, Low Pressure
Inflatable Shelters



KEY FEATURES



Assembly within Hours: Can be set up in hours by six people using electric inflators.



Compact: Easy to transport and relocate.



Generous Interior Space: Optimized design for maximum usable area.



All-Climate Use: Suitable for diverse and harsh climates.



Durable Materials: Flame-retardant, tear-resistant, waterproof, rot-proof, and UV-treated fabric.



Modular Design: Preassembled modules connect seamlessly with zippers, locking pins, and hook-and-loop fasteners.

TECHNICAL DETAILS

FRAME MATERIAL

Airtight inflatable tubular frame (1.1 kg/m²) with foldable aluminum tubes for added stability.

TENT SKIN

Made of PVC-coated polyester fabric (0.75 kg/m²) for durability in extreme temperatures (-30°C to +70°C). High resistance to tears and fungus.

FLOOR

Double-sided PVC-coated polyester fabric with optional anti-slip surface.

DESIGN

Delivered preassembled, with only aluminum tubes requiring on-site assembly.

AZM SERIES | MEDIUM DUTY, LOW PRESSURE



WEIGHT: 566 - 765 KG

WIND LOAD: 100 KM/H

SNOW LOAD: 20 KG/M³

| | AZM 8-4 SR | AZM 11-6 SR |
|--------------|------------|-------------|
| Width | 8.30 m | 11.30 m |
| Length | 12.50 m | 22.20 m |
| Eaves height | 3.16 m | 4.50 m |
| Ridge height | 4.15 m | 6.12 m |

INX Series

Exoskeleton Shelters



KEY FEATURES



Easy Deployment: Simply position, inflate, slide in the exoskeleton poles, and it is ready for use within minutes.



Modular and Interconnectable: Easily expandable for diverse needs.



Exoskeleton Durability: Provides superior strength and longevity.



Weather-Resistant Materials: Flame-retardant, UV-resistant PVC fabric.



Compact and Portable: Simple setup and efficient storage.

TECHNICAL DETAILS

FRAME MATERIAL

Anodized aluminum exoskeleton with inflatable air beams (1.1 kg/m² PVC-coated fabric) secured with a safe-locking system. Includes a pressure relief valve to prevent overinflation.

TENT SKIN

Double-sided PVC-coated polyester fabric (0.75 kg/m²), flame-retardant, waterproof, and mildew-resistant. Optional anti-slip groundsheet (0.85 kg/m²).

PERFORMANCE

Snow load: 50 kg/m² with exoskeleton, 20 kg/m² with inflatable structure only.

Wind resistance: 100 km/h steady winds, 120 km/h gusts.

CUSTOMIZABLE OPTIONS

Fabric upgrades to military standards, additional entrances/windows, inner liners, sunroofs, lighting, air conditioning, heating, branding, and more

INX SERIES | EXOSKELETON SHELTERS



WIND LOAD: 100 KM/H

SNOW LOAD: 50 KG/M³

| | INX 29 | INX 42 | INX 56 |
|----------------|--------|--------|--------|
| Width | 5.80 m | 5.80 m | 5.80 m |
| Length | 5.15 m | 7.55 m | 9.95 m |
| Central height | 2.25 m | 2.25 m | 2.25 m |
| Ridge height | 3.05 m | 3.05 m | 3.05 m |

HALF-BARREL Series

Low Pressure



KEY FEATURES



Durable Frame: Aluminium profiles ensure strength and weather resistance.



Portable Design: Easy transport and assembly.



Weatherproof Materials: UV-resistant, waterproof, and climate-adaptable PVC-coated fabric.



Improved Ventilation: Eight climatization passages for efficient air circulation and climate control.

TECHNICAL DETAILS

FRAME

Ground frame with rectangular profiles, arches, and spacers made from lightweight, durable aluminium. Galvanized steel pins ensure reliable connections.

SKIN AND FLOORING

- Roof and sidewalls integrated with lightweight PVC-coated fabric (0.62 kg/m²).
- Groundsheet made of heavy-duty PVC fabric (0.80 kg/m²), detachable and secured with Velcro.
- Optional anti-slip embossing for enhanced safety.

CUSTOMIZABLE OPTIONS

Partition walls, sunroofs, side entrances, rigid modular flooring, air conditioning, and more.

HALF-BARREL SERIES | LOW PRESSURE



WEIGHT: 255 KG

| | AMPLIFIER 13 | AMPLIFIER 25 | AMPLIFIER 37 |
|----------------|--------------|--------------|--------------|
| Width | 4.40 m | 4.40 m | 5.28 m |
| Length | 4.00 m | 5.00 m | 5.00 m |
| Eaves height | 1.15 m | 1.15 m | 1.15 m |
| Central height | 1.95 m | 1.95 m | 2.16 m |

HALF-BARREL Series

High Pressure



KEY FEATURES



Heavy-Duty Construction: High-pressure arches inflated to 8 bars (116 psi) for superior strength and weather resistance.



Integrated Design: Sidewalls, roof, gables, and floor are welded into a single waterproof unit.



Low Maintenance: Requires minimal upkeep, even during field operations.



Enhanced Ventilation: Three-layer windows provide natural light and airflow.



Flexible Interior: Partition walls allow for division into multiple rooms or cabins.



All-Terrain Use: Suitable for diverse climates and terrains.

TECHNICAL DETAILS

STRUCTURE

Modular design allows connection to other shelters (length- and crosswise) or vehicles. Available in lengths of 6, 8, and 10 meters, with a standard width of 6 meters.

PERFORMANCE

- Wind resistance: Steady winds up to 100 km/h.
- Flooring: Anti-skid PVC for protection against surface water, reptiles, and bugs.

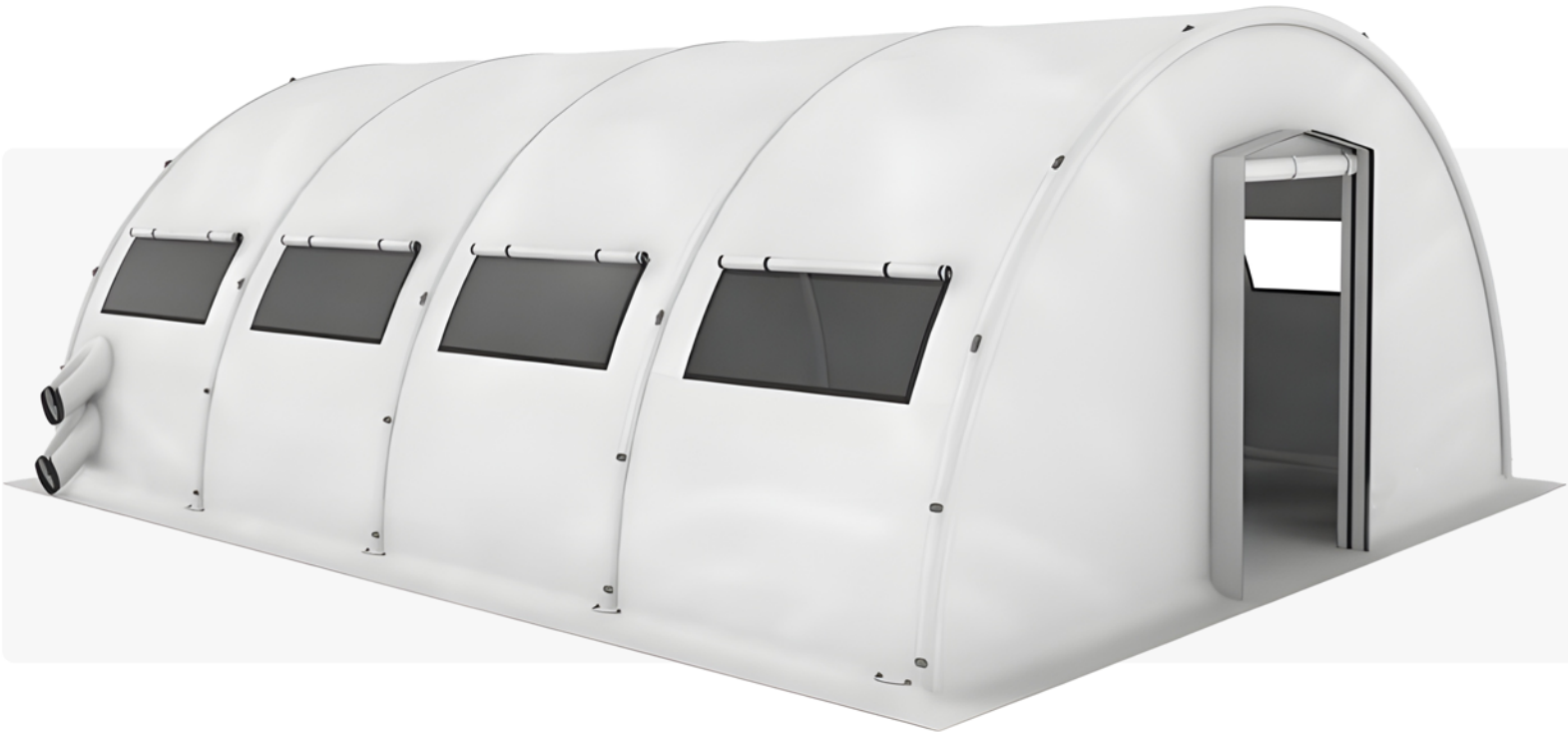
RIS INSULATION SYSTEM

Optional inner liner designed for special climates, ensuring occupant comfort in extreme conditions.

CUSTOMIZABLE OPTIONS:

Partition walls, sunroofs, side entrances, rigid modular flooring, air conditioning, and more.

HALF-BARREL SERIES | HIGH PRESSURE



OPERATION PRESSURE: 6 - 8 BARS

WINDOWS: 4 TO 10

GUY ROPES: 10 TO 16

ANCHORING POINTS: 16 TO 22

WIND LOAD: 100 KM/H

SNOW LOAD: 20 KG/M³

| | RAPID 504 | RAPID 506 | RAPID 508 | RAPID 606 | RAPID 608 | RAPID 610 |
|-------------------|--------------|--------------|--------------|--------------|--------------|--------------|
| Width | 5.00 m | 5.00 m | 5.00 m | 6.00 m | 6.00 m | 6.00 m |
| Length | 4.00 m | 6.00 m | 8.00 m | 6.00 m | 8.00 m | 10.00 m |
| Central height | 2.70 m | 2.60 m | 2.60 m | 3.00 m | 3.00 m | 3.00 m |

PROJECTS FOOTPRINT



MIDDLE EAST

SAUDI ARABIA
BAHRAIN
OMAN
YEMEN
LEBANON
JORDAN
KUWAIT
UNITED ARAB EMIRATES
QATAR
PALESTINE

AFRICA

MOROCCO
MAURITANIA
ALGERIA
TUNISIA
LIBYA
EGYPT
TANZANIA
CONGO
CHAD
NIGER
ANGOLA

CAMEROON
NIGERIA
TOGO
GHANA
COTE D'IVOIRE
GUINEA
MALI
SENEGAL
ETHIOPIA
DJIBOUTI
SOMALIA

EUROPE

PORTUGAL
SPAIN
AUSTRIA
ITALY
GREECE
RUSSIA
GEORGIA
ARMENIA
TURKEY

NORTH AMERICA

USA
MEXICO

SOUTH AMERICA

BRAZIL

ASIA

INDIA

1971
ALB

ALB



@Albaddad



@albaddad



@albaddad1971



@albaddad1971

